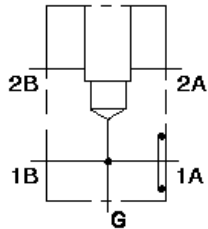


MODELL
ZQB-/S

Zwischenflansch-Gehäuse, durchgehender Anschluss
EINSCHRAUBBOHRUNG: T-16A



KONFIGURATION ÄNDERN

/S Modifier 65-45-12 Ductile
Iron, Buna-N,
Blackened

TECHNISCHE DATEN

Gehäusotyp	Rohrleitungseinbau
Lochbild	SAE 1 1/2" - 3000 psi
Gehäuseeigenschaften	Zwischenflansch-Gehäuse, durchgehender Anschluss
Einschraubbohrung	T-16A
Open Cavities	1
Anschlussgröße	SAE 1 1/2" - 3000 psi
Gewicht	0.00 kg.

PORT HEADINGS AND SIZES

Model	Port Heading	Size
ZQB	Port 1	1 1/2" Code 61
ZQB	Port 2	1 1/4" BSPP
ZQB	Gage Port	1/4" BSPP

BEMERKUNGEN

This manifold is designed to work with an inch based flange.

Important: Carefully consider the maximum system pressure. The pressure rating of the manifold is dependent on the manifold material, with the port type/size a secondary consideration. Manifolds constructed of aluminum are not rated for pressures higher than 3000 psi (210 bar), regardless of the port type/size specified.

MANIFOLD FACES

FACE GRID

1	2	3	4
5	6	7	8
9	10	11	12

Face 2

Face 5

Face 6

□

Face 7

□

Face 8

□

Face 10

□

Copyright © 2002-2014 Sun Hydraulics Corporation. All rights reserved.