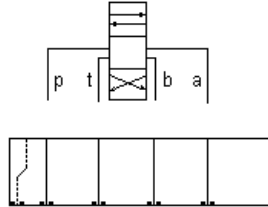
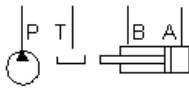


**MODELL**  
ZJB

**Adapter von ISO 05 - X und Y (Europa) X Anschluss auf Bosch L Anschluss**



Circuit Saver, Adaptor from Cetop X to Bosch L Port



### TECHNISCHE DATEN

Gehäusotyp	Sandwich
Lochbild	ISO 05 - X und Y (Europa)
Gehäuseeigenschaften	Adapter von ISO 05 - X und Y (Europa) X Anschluss auf Bosch L Anschluss
Verkettungshöhe	24 mm
Open Cavities	0
Gewicht	0.34 kg.

### KONFIGURATION ÄNDERN

(none) Modifier 6061-T651  
Aluminum, Buna-N

### KOMPONENTEN

Part	Beschreibung	Anzahl
500-001-010	O-Ring	1
500-001-014	O-Ring	5

### BEMERKUNGEN

**Important:** Carefully consider the maximum system pressure. The pressure rating of the manifold is dependent on the manifold material, with the port type/size a secondary consideration. Manifolds constructed of aluminum are not rated for pressures higher than 3000 psi (210 bar), regardless of the port type/size specified.

### CONFIGURATION OPTIONS

#### MODIFIER

Standard Options	Modifier	Description
/S	6061-T651 Aluminum, Buna-N	
/V	65-45-12 Ductile Iron, Buna-N, Blackened	
/Y	6061-T651 Aluminum, Viton	
	65-45-12 Ductile Iron, Viton, Blackened	

### MANIFOLD FACES

#### FACE GRID

1	2	3	4
5	6	7	8
9	10	11	12

## **Face 6**

□

## **Face 7**

□

## **Face 8**

□

Copyright © 2002-2014 Sun Hydraulics Corporation. All rights reserved.