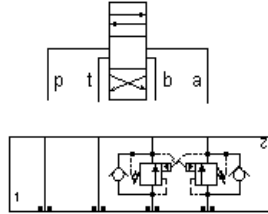
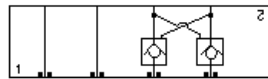


MODELL
Z6Q

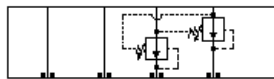
Gegenseitige Aufsteuerung, in A und B
EINSCHRAUBBOHRUNG: T-11A



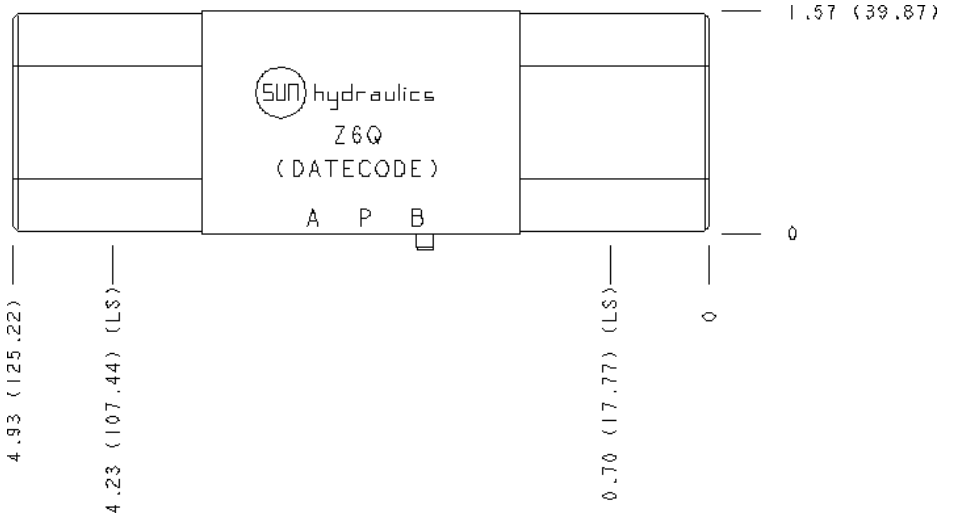
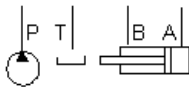
Counterbalance, On A and B, Cross-Piloted



Pilot Operated Check, On A and B, Cross-Piloted



Reducing, On A and B drain to opposite port



KONFIGURATION ÄNDERN

(none) Modifier 6061-T651 Aluminum, Buna-N

KOMPONENTEN

Part	Beschreibung	Anzahl
500-001-012	O-Ring	4
811-001-006	Pin	1
850-004-156	Plug	2

BEMERKUNGEN

Important: Carefully consider the maximum system pressure. The pressure rating of the manifold is dependent on the manifold material, with the port type/size a secondary consideration. Manifolds constructed of aluminum are not rated for pressures higher than 3000 psi (210 bar), regardless of the port type/size specified.

TECHNISCHE DATEN

Gehäusotyp	Sandwich
Lochbild	ISO 03 - 40 mm
Gehäuseeigenschaften	Gegenseitige Aufsteuerung, in A und B
Einschraubbohrung	T-11A
Open Cavities	2
Gewicht	0.44 kg.

CONFIGURATION OPTIONS

MODIFIER

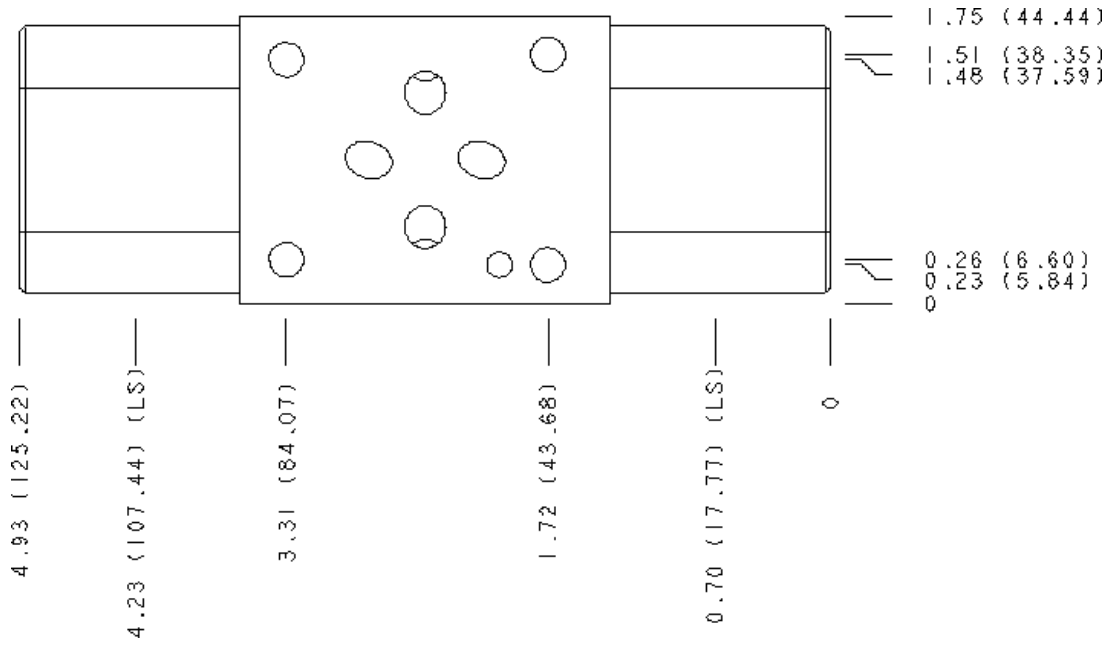
Standard Options	/S	6061-T651 Aluminum, Buna-N
	/V	65-45-12 Ductile Iron, Buna-N, Blackened
	/N	6061-T651 Aluminum, Viton
	/Y	65-45-12 Ductile Iron, Viton, Blackened

MANIFOLD FACES

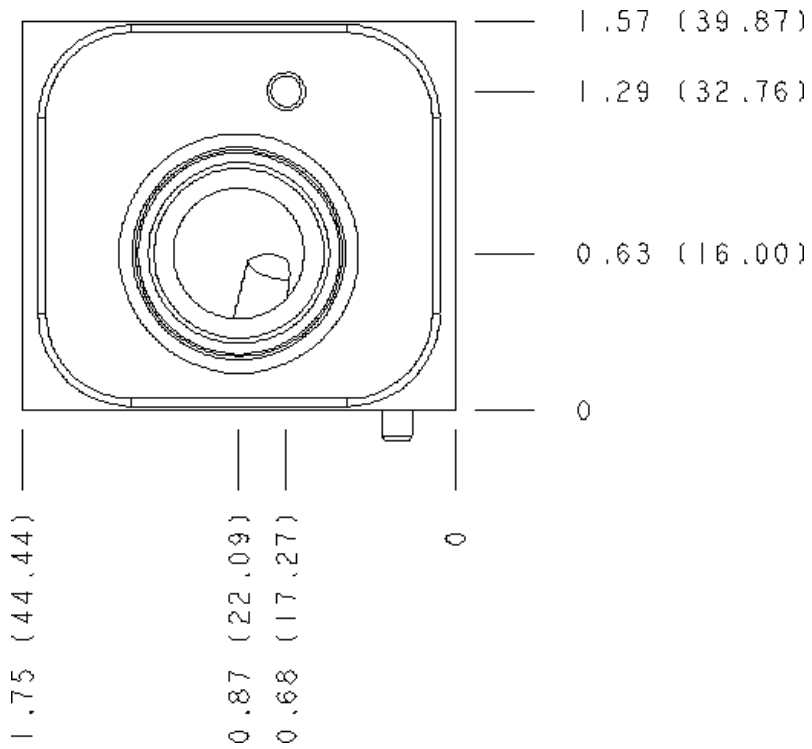
FACE GRID

1	2	3	4
5	6	7	8
9	10	11	12

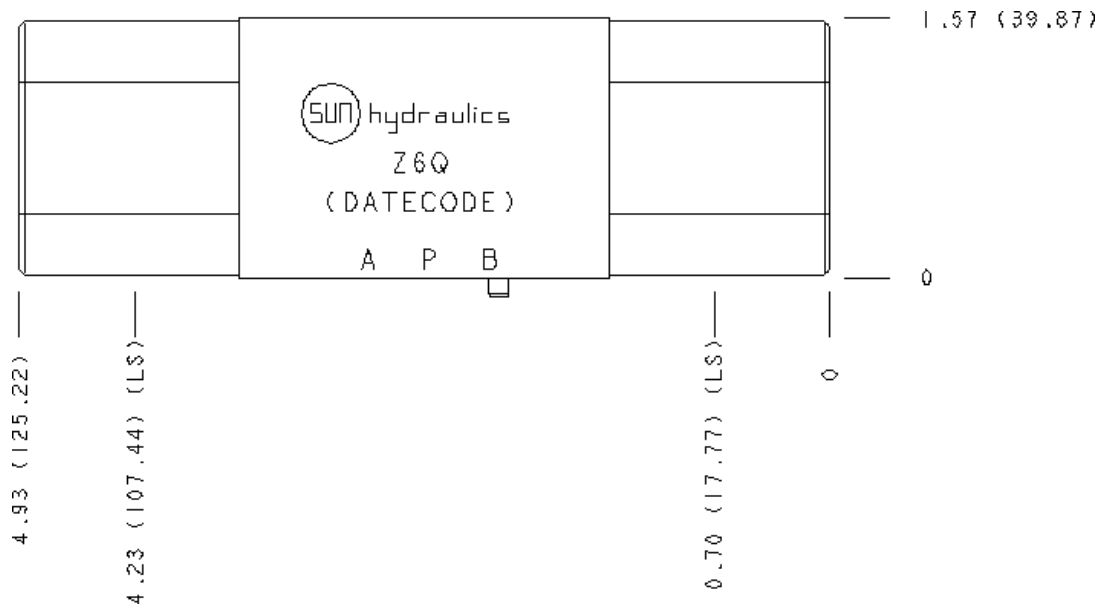
Face 2



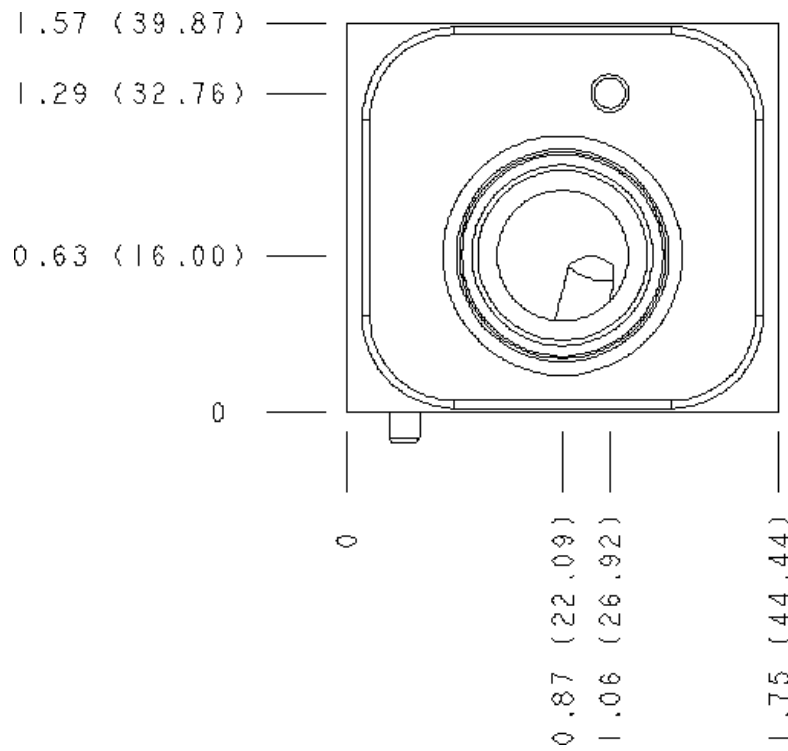
Face 5



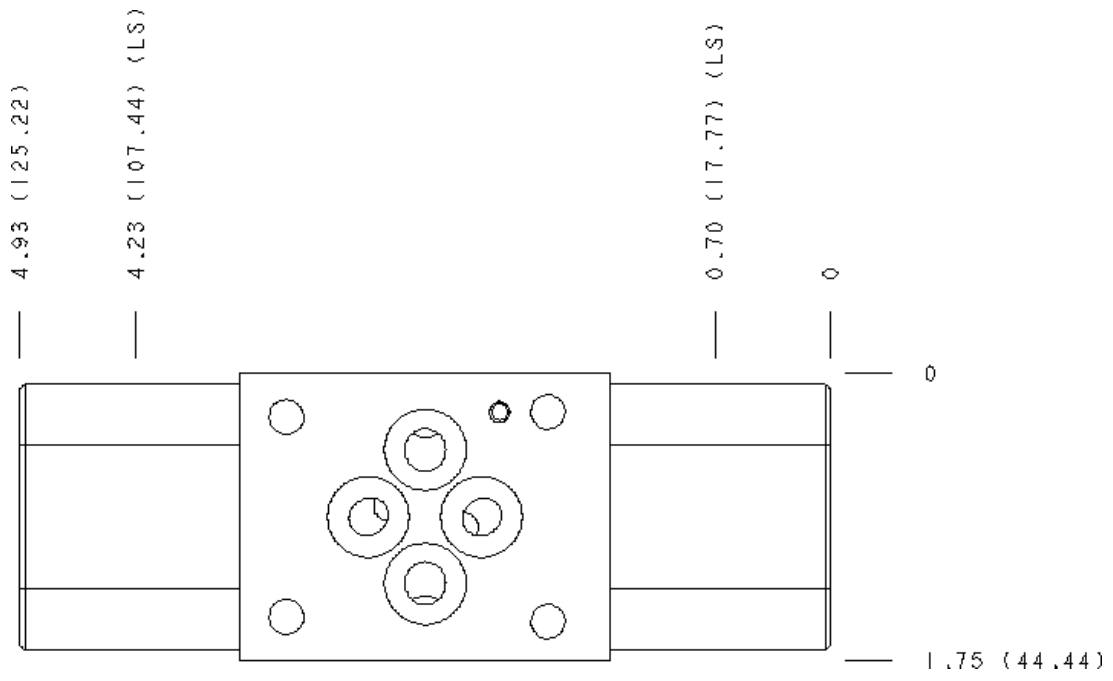
Face 6



Face 7



Face 10



Copyright © 2002-2014 Sun Hydraulics Corporation. All rights reserved.