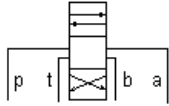
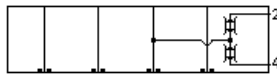


MODELL
MBJ-/M

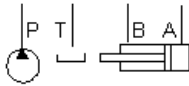
In A oder B
EINSCHRAUBBOHRUNG: T-31A



Circuit Saver, Flow Divider and/or Combiner on A



Circuit Saver, Flow Divider and/or Combiner on B



KONFIGURATION ÄNDERN

/M	Modifier	6061-T651 Aluminum, Metric, Buna-N
-----------	----------	--

PORT HEADINGS AND SIZES

Model	Port Heading	Size
MBJ	Ports 2 & 4	SAE 6
MBJ/M	Ports 2 & 4	1/4" BSPP

BEMERKUNGEN

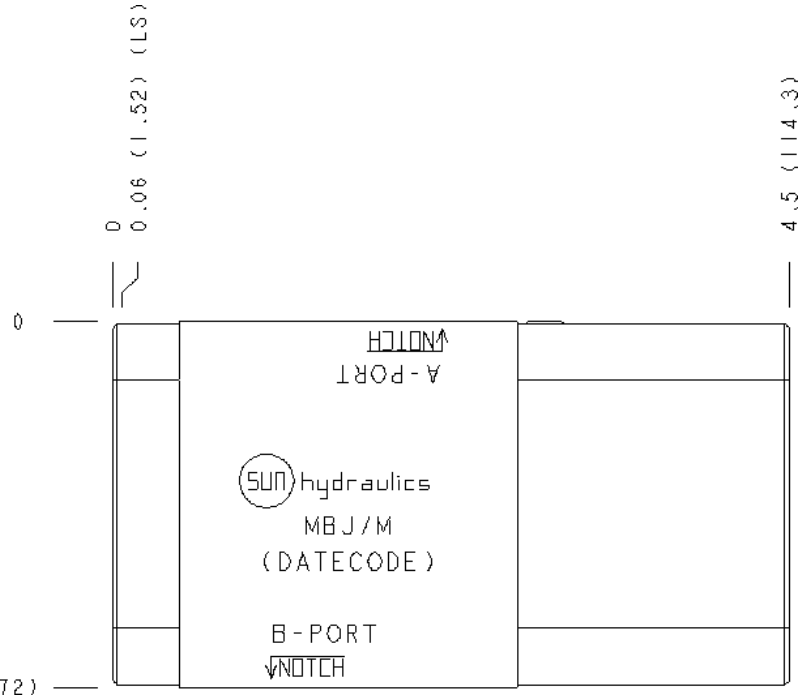
Important: Carefully consider the maximum system pressure. The pressure rating of the manifold is dependent on the manifold material, with the port type/size a secondary consideration. Manifolds constructed of aluminum are not rated for pressures higher than 3000 psi (210 bar), regardless of the port type/size specified.

MANIFOLD FACES

FACE GRID

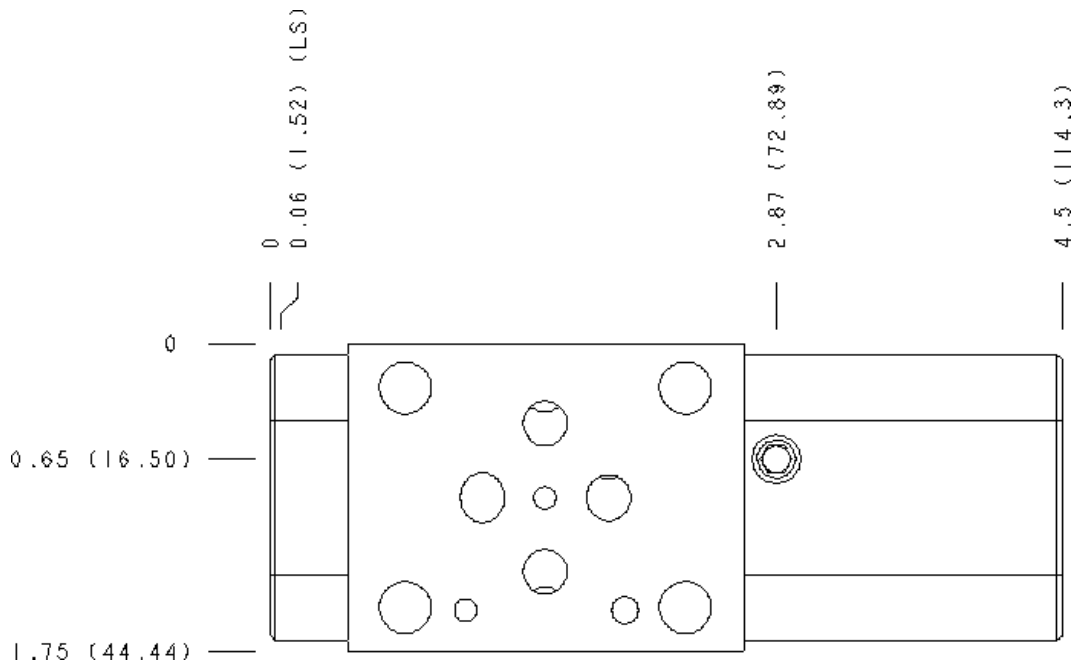
1	2	3	4
5	6	7	8
9	10	11	12

Face 2

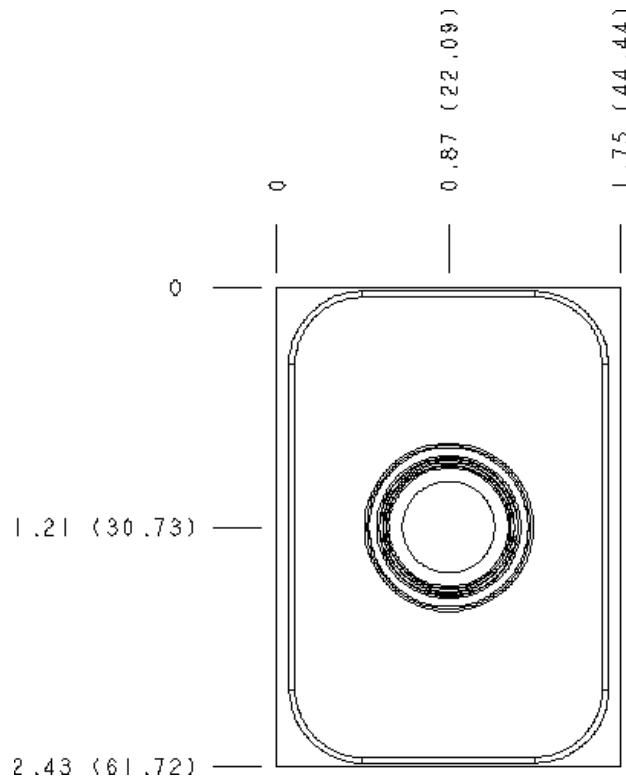


TECHNISCHE DATEN

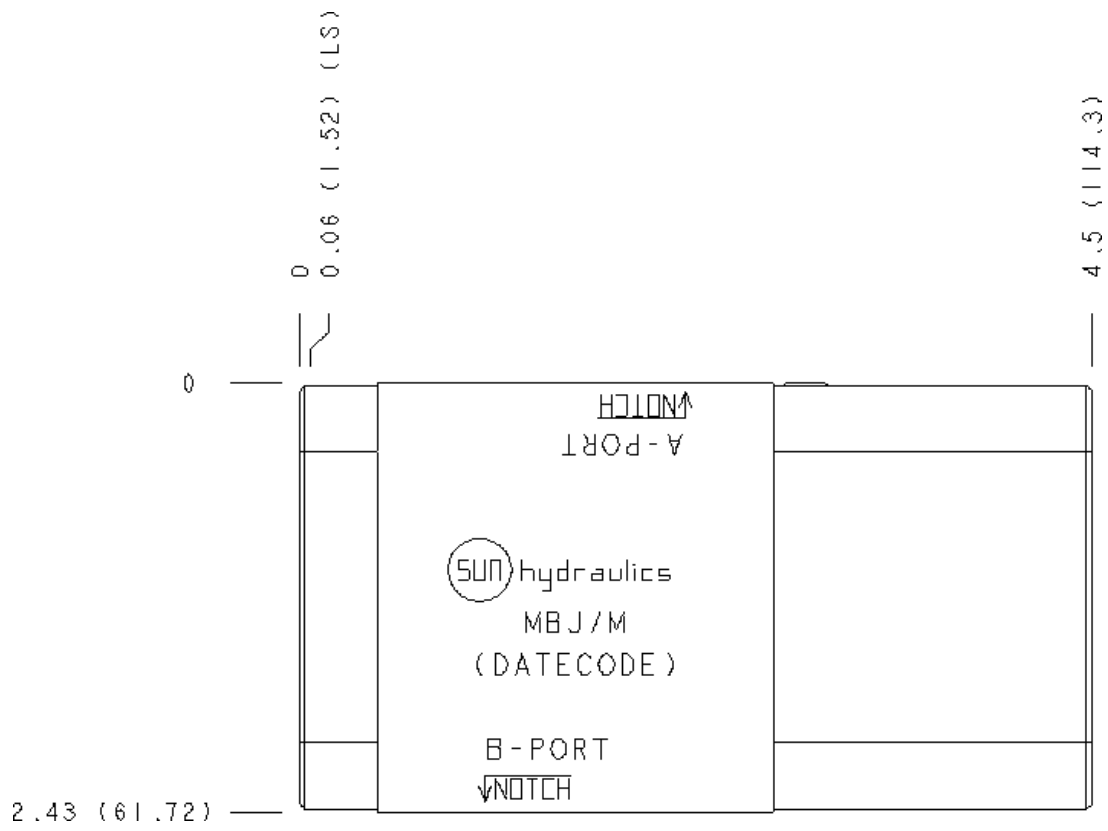
Gehäusetyp	Sandwich
Lochbild	ISO 03
Gehäuseeigenschaften	In A oder B
Verkettungshöhe	63 mm
Einschraubbohrung	T-31A
Open Cavities	1
Anschlussgröße	SAE 6
Gewicht	0.00 kg.



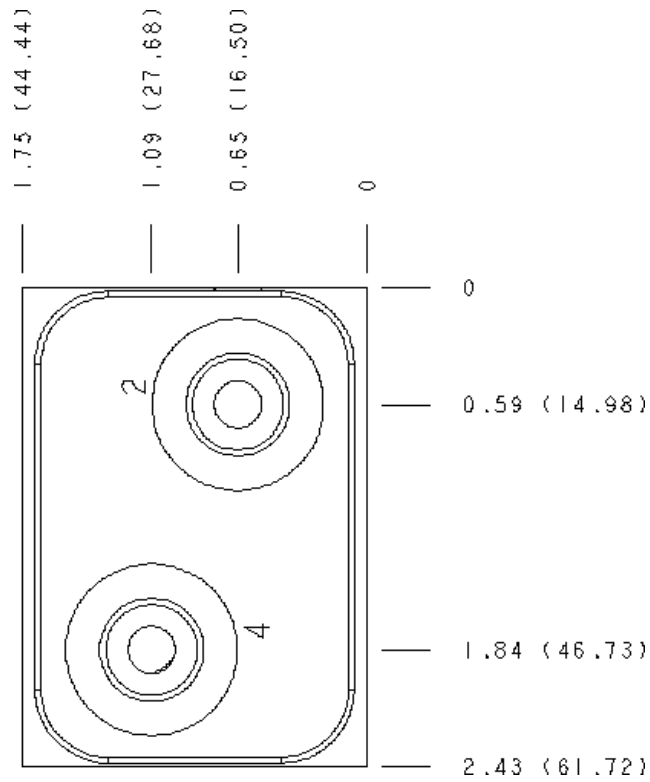
Face 5



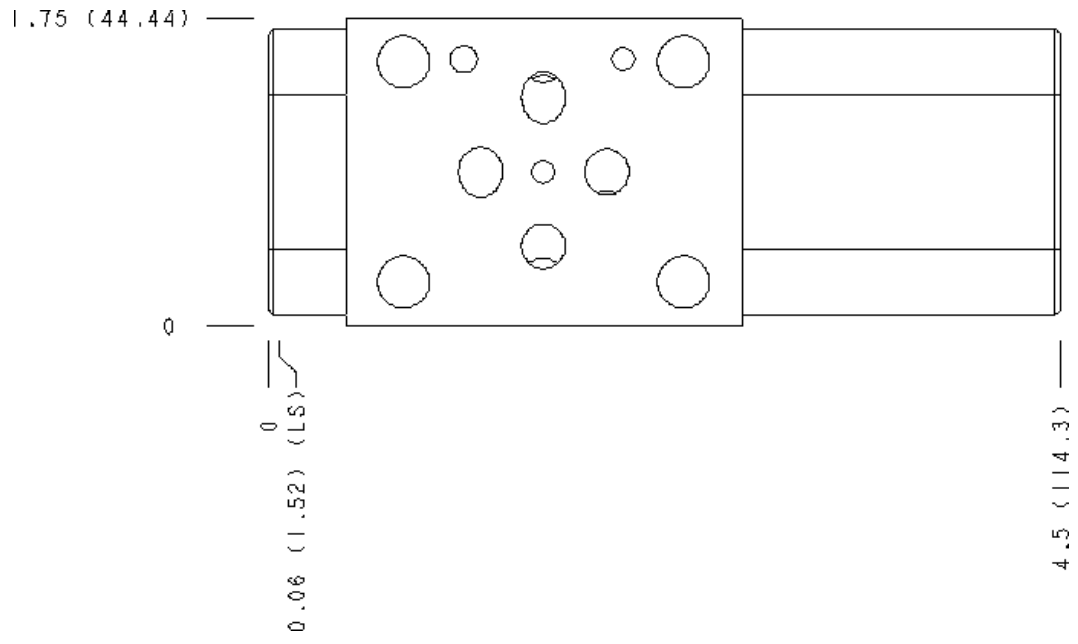
Face 6



Face 7



Face 10



Copyright © 2002-2014 Sun Hydraulics Corporation. All rights reserved.