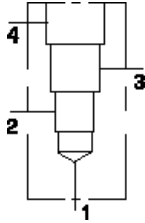


**MODELL**  
MAV

**90 Grad**  
**EINSCHRAUBBOHRUNG: T-21A**



### KONFIGURATION ÄNDERN

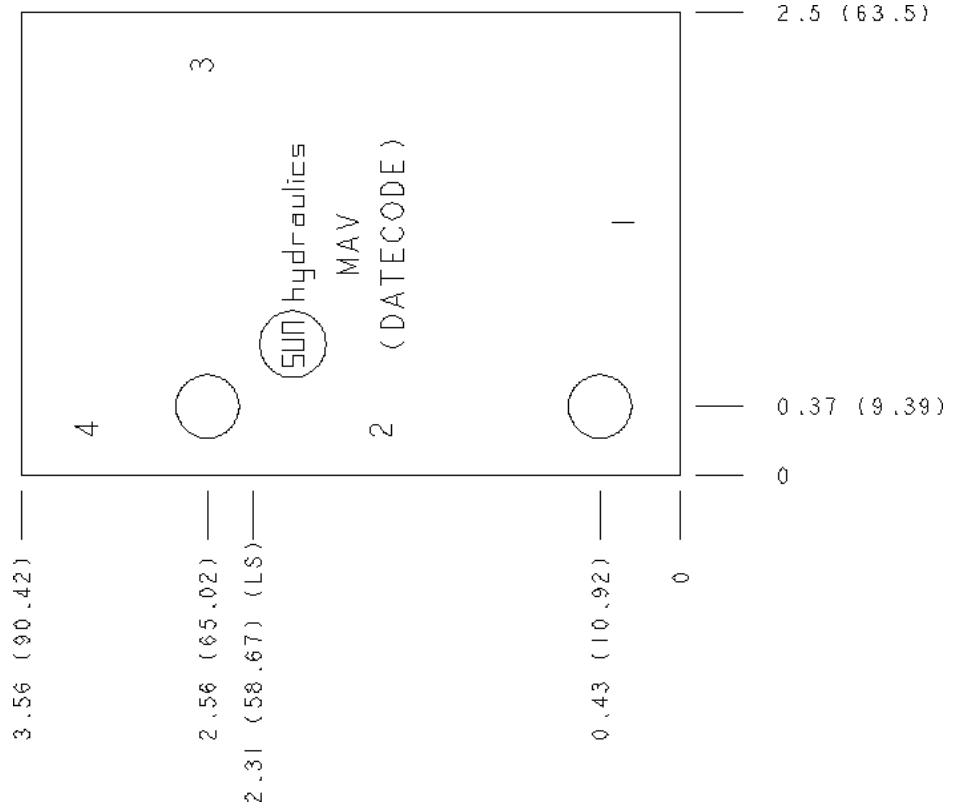
(none) Modifier 6061-T651  
Aluminum, Buna-N

### PORT HEADINGS AND SIZES

Model	Port Heading	Size
MAV	Ports 1 & 2	1/2" BSPP
MAV	Port 3	3/8" BSPP
MAV	Port 4	1/4" BSPP

### BEMERKUNGEN

**Important:** Carefully consider the maximum system pressure. The pressure rating of the manifold is dependent on the manifold material, with the port type/size a secondary consideration. Manifolds constructed of aluminum are not rated for pressures higher than 3000 psi (210 bar), regardless of the port type/size specified.



### TECHNISCHE DATEN

Gehäusotyp	Rohrleitungseinbau
Lochbild	Kein
Gehäuseeigenschaften	90 Grad
Montagebohrungsdurchmesser	8.6 mm
Montagebohrungstiefe	durchgehend
Anzahl der Montagebohrungen	2
Einschraubbohrung	T-21A
Open Cavities	1
Anschlussgröße	G 1/2"
Gewicht	0.37 kg.

### CONFIGURATION OPTIONS

#### MODIFIER

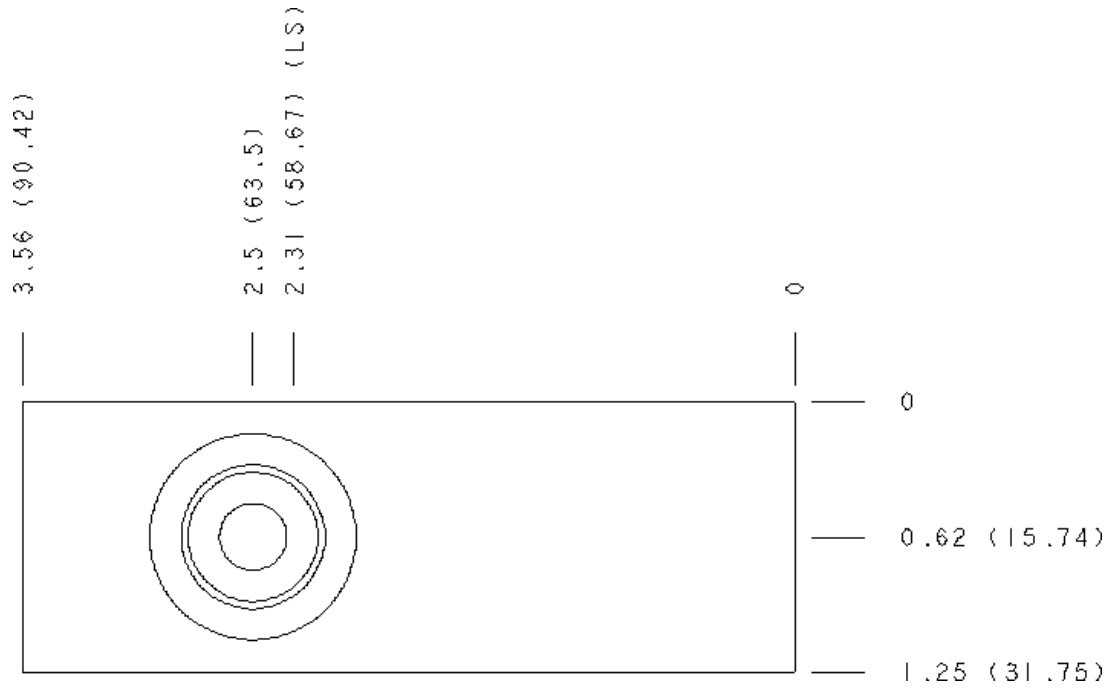
**Standard Options** /S 6061-T651 Aluminum, Buna-N  
65-45-12 Ductile Iron, Buna-N, Blackened

### MANIFOLD FACES

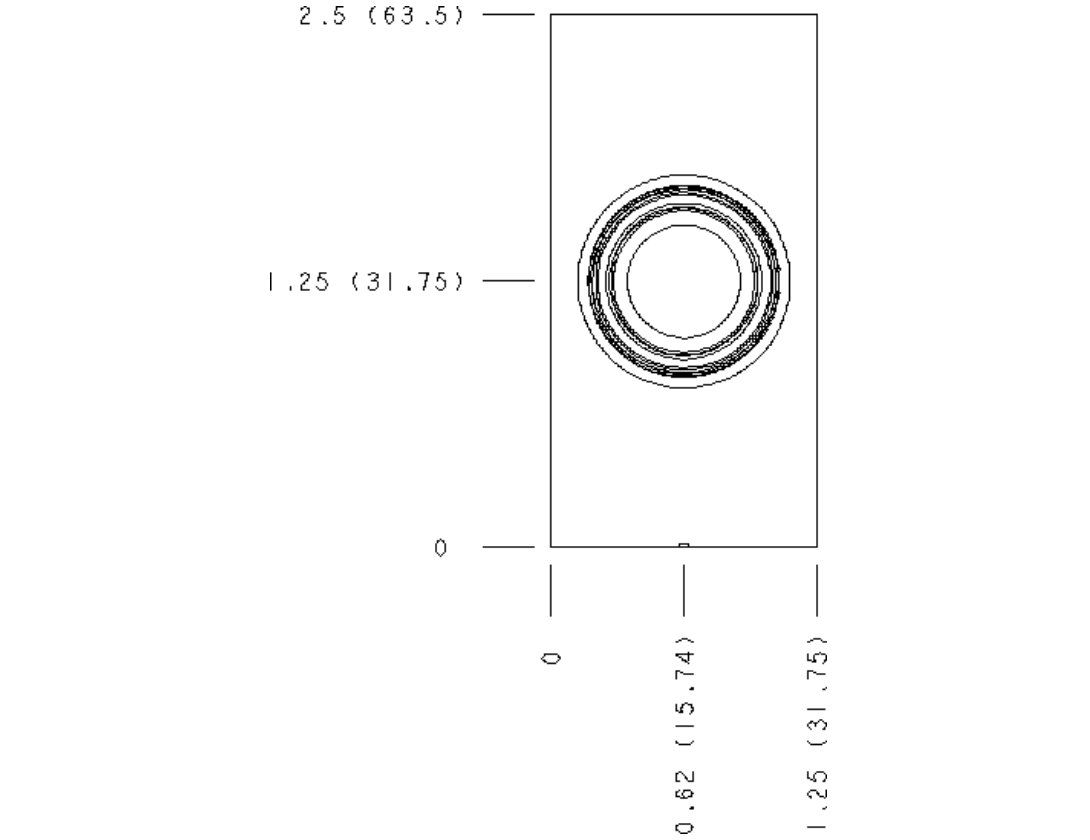
#### FACE GRID

1	2	3	4
5	6	7	8
9	10	11	12

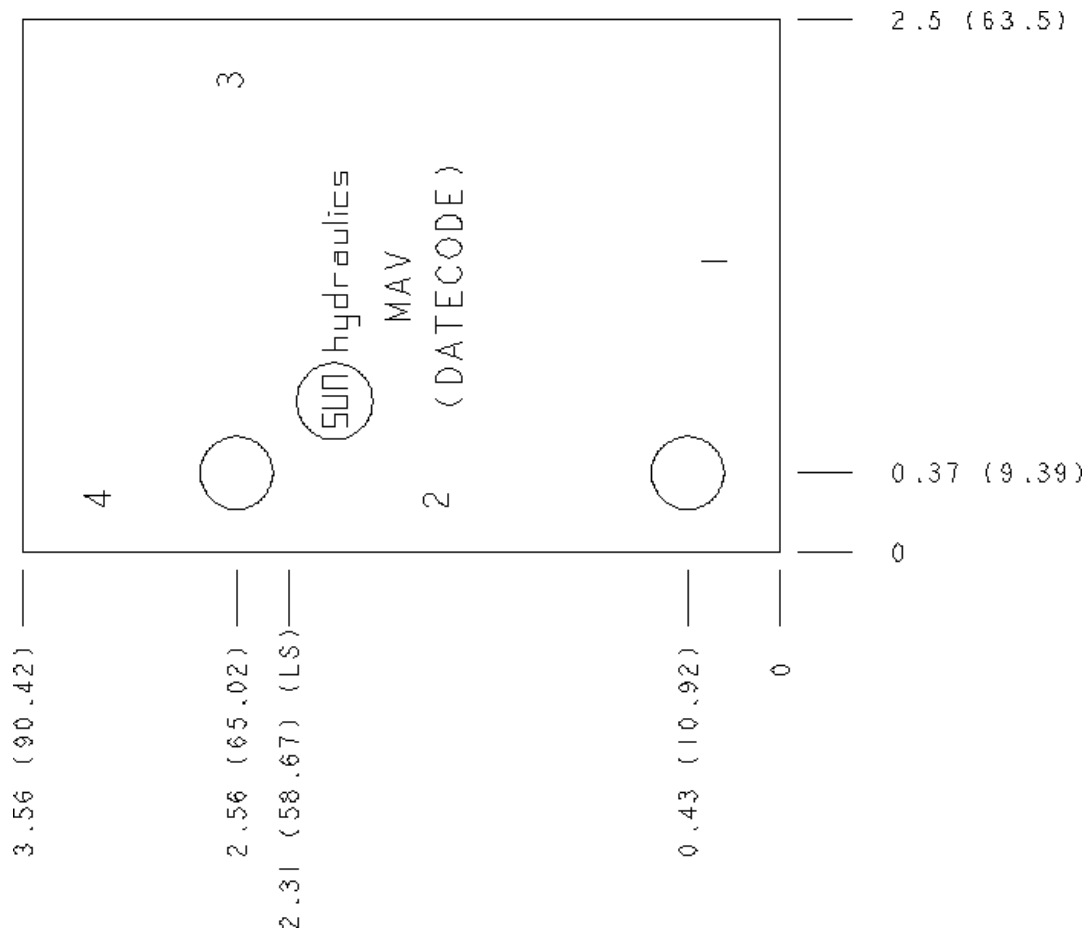
**Face 2**



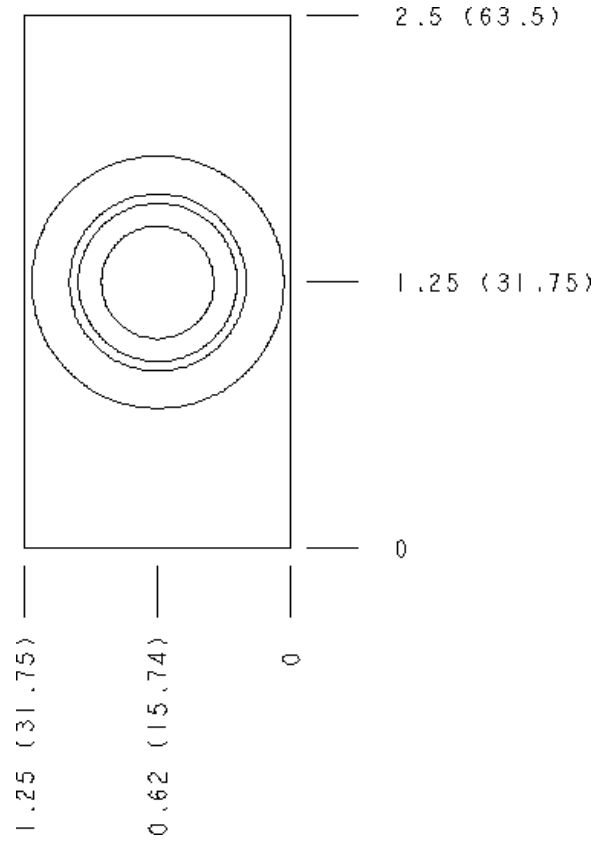
**Face 5**



**Face 6**



### Face 7



### Face 10

