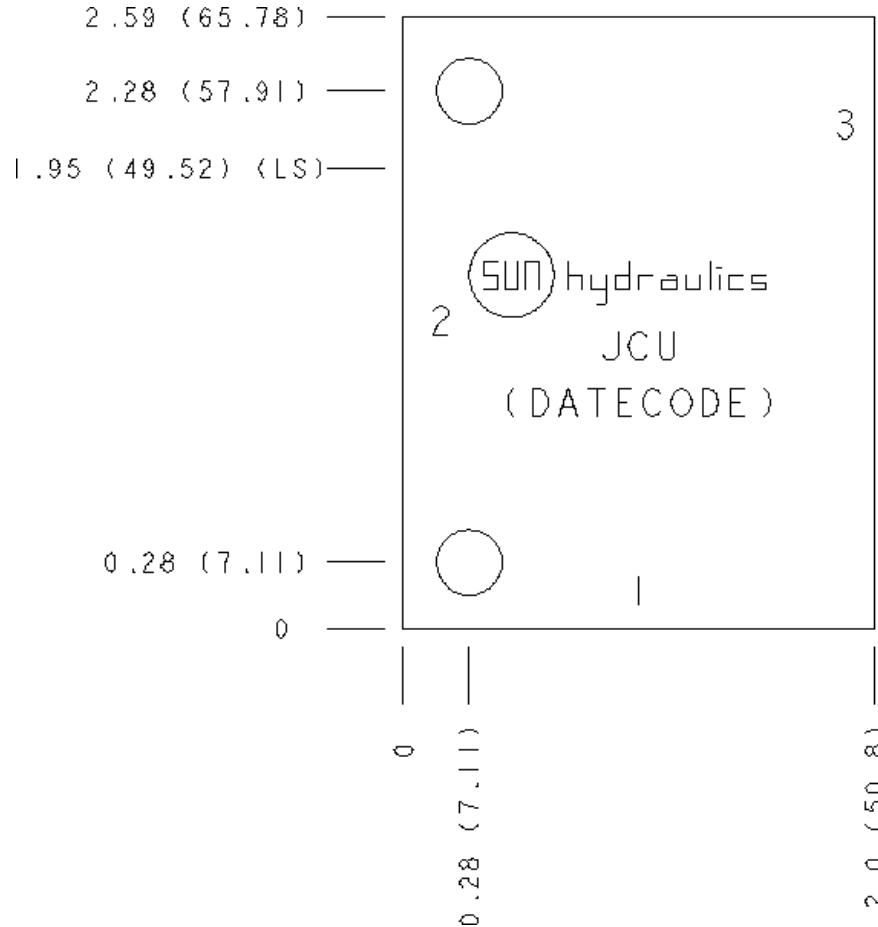
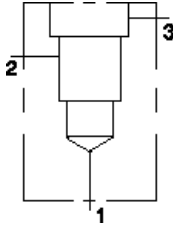


**MODELL**  
JCU

**90 Grad**  
**EINSCHRAUBBOHRUNG: T-163A**



### KONFIGURATION ÄNDERN

(none) Modifier 6061-T651  
Aluminum, Buna-N

### PORT HEADINGS AND SIZES

Model	Port Heading	Size
JCU	Ports 1 & 2	3/8" BSPP
JCU	Port 3	1/4" BSPP

### BEMERKUNGEN

**Important:** Carefully consider the maximum system pressure. The pressure rating of the manifold is dependent on the manifold material, with the port type/size a secondary consideration. Manifolds constructed of aluminum are not rated for pressures higher than 3000 psi (210 bar), regardless of the port type/size specified.

### TECHNISCHE DATEN

Gehäusetyp	Rohrleitungseinbau
Lochbild	Kein
Gehäuseeigenschaften	90 Grad
Montagebohrungsdurchmesser	7,1 mm
Montagebohrungstiefe	durchgehend
Anzahl der Montagebohrungen	2
Einschraubbohrung	T-163A
Open Cavities	1
Anschlussgröße	G 3/8"
Gewicht	0.18 kg.

### CONFIGURATION OPTIONS

#### MODIFIER

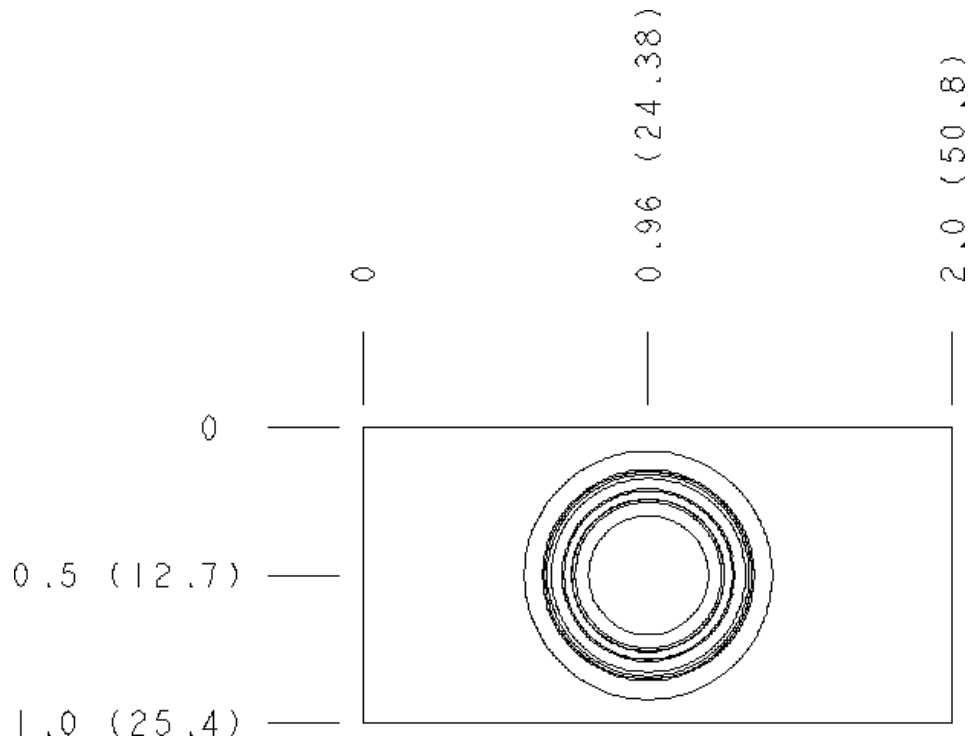
**Standard Options** /S 6061-T651 Aluminum, Buna-N  
65-45-12 Ductile Iron, Buna-N, Blackened

**MANIFOLD FACES**

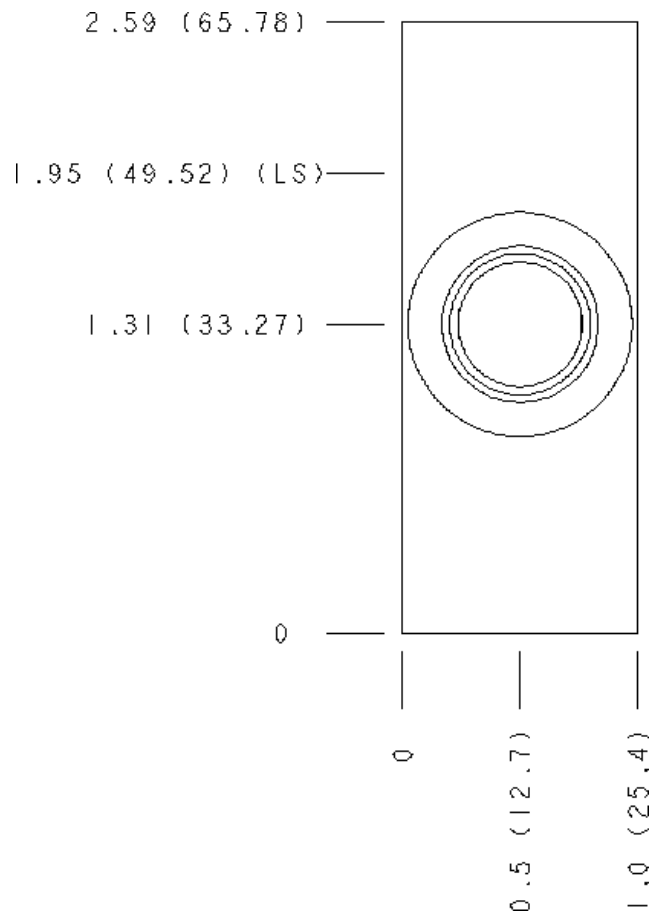
**FACE GRID**

1	2	3	4
5	6	7	8
9	10	11	12

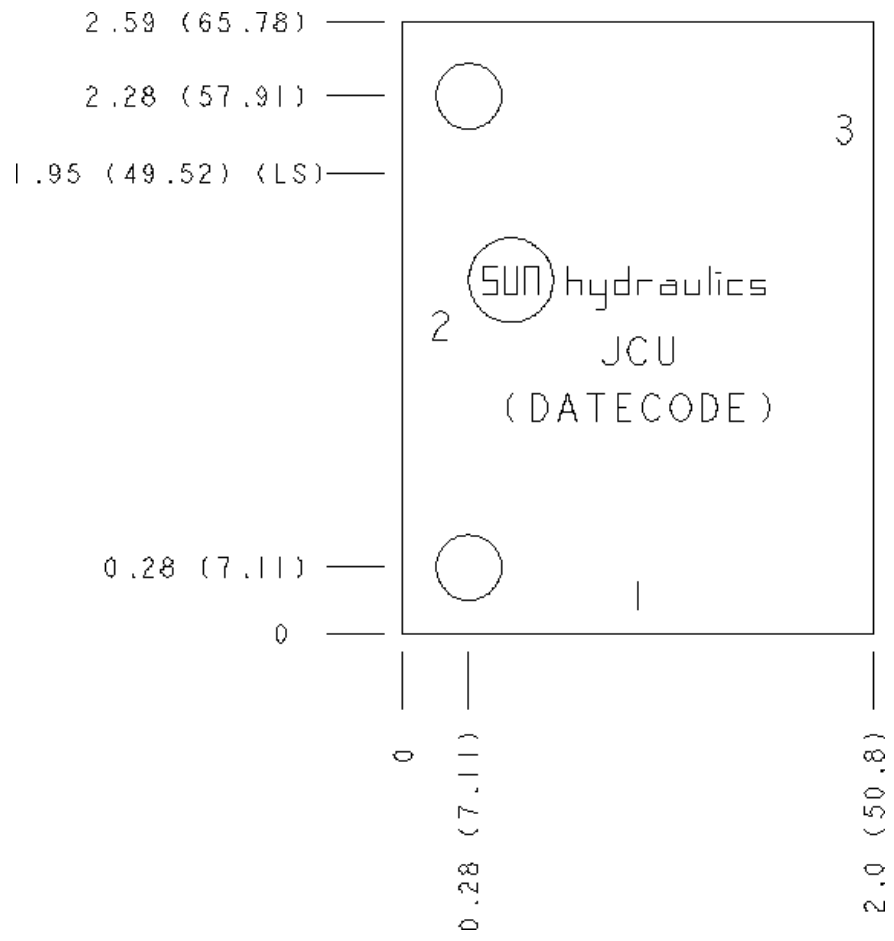
**Face 2**



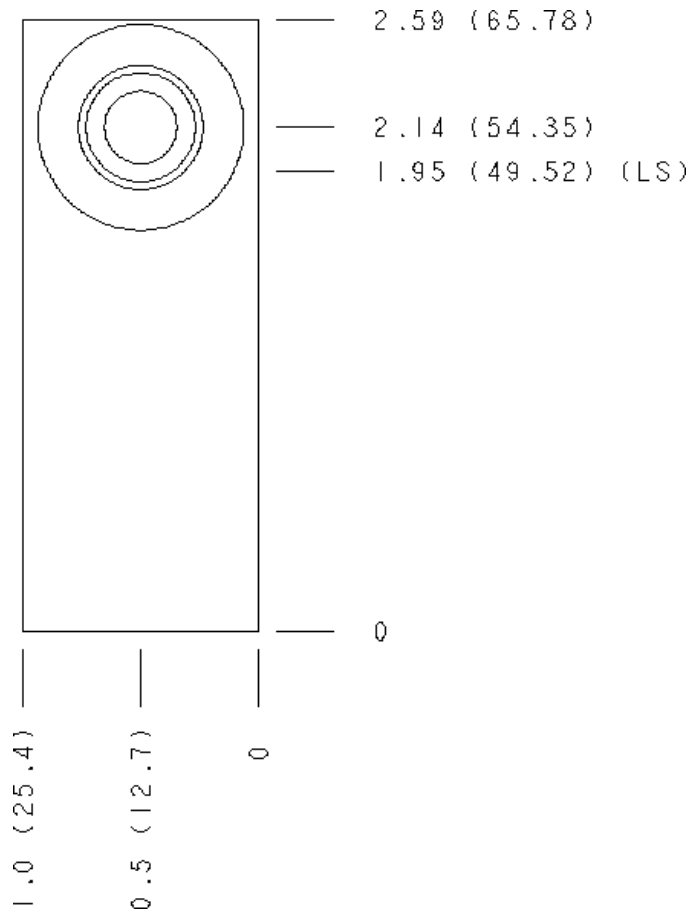
**Face 5**



**Face 6**



**Face 7**



**Face 10**

