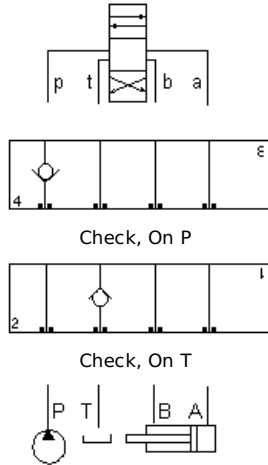


**MODELL**  
GDP

**In P oder aus T**  
**EINSCHRAUBBOHRUNG: T-13A**



**KONFIGURATION ÄNDERN**

(none) Modifier 6061-T651 Aluminum, Buna-N

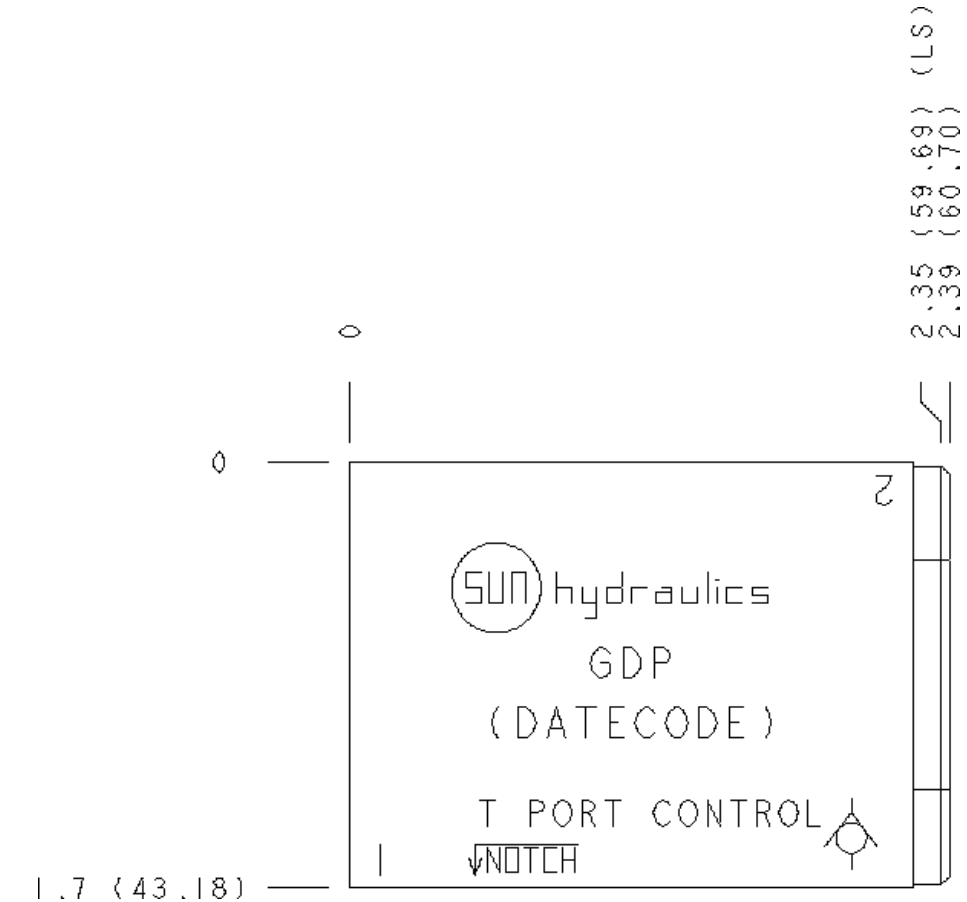
**KOMPONENTEN**

Part	Beschreibung	Anzahl
500-001-012	O-Ring	4
700-002	Seal Plate	1
811-001-006	Pin	1

**BEMERKUNGEN**

For check valve application, use only with CX\*A check valves - free flow nose to side.

**Important:** Carefully consider the maximum system pressure. The pressure rating of the manifold is dependent on the manifold material, with the port type/size a secondary consideration. Manifolds constructed of aluminum are not rated for pressures higher than 3000 psi (210 bar), regardless of the port type/size specified.



**TECHNISCHE DATEN**

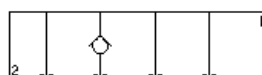
Gehäusotyp	Sandwich
Lochbild	ISO 03
Gehäuseeigenschaften	in P oder aus T
Verkettungshöhe	44,5 mm
Einschraubbohrung	T-13A
Open Cavities	1

**SYMBOLS**

Check, On P



Check, On T



**CONFIGURATION OPTIONS**

**MODIFIER**

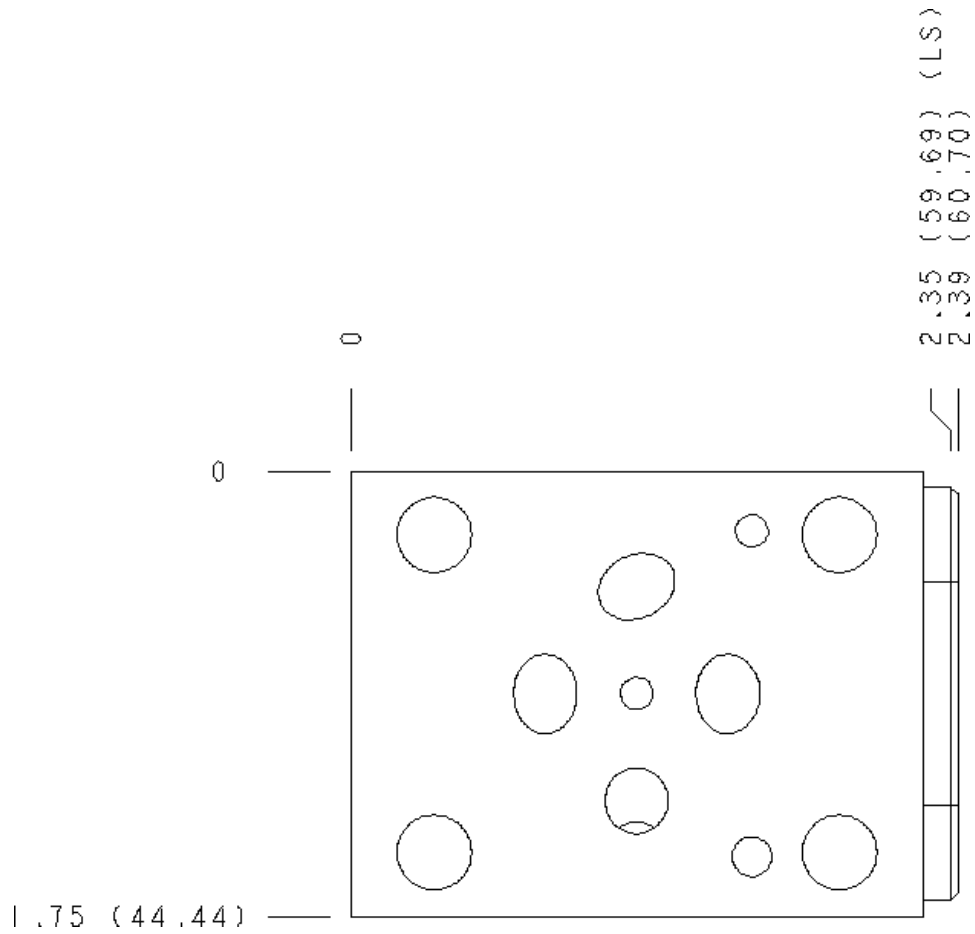
		6061-T651 Aluminum, Buna-N
<b>Standard Options</b>	<b>/S</b>	65-45-12 Ductile Iron, Buna-N, Blackened
	<b>/V</b>	6061-T651 Aluminum, Viton
	<b>/Y</b>	65-45-12 Ductile Iron, Viton, Blackened

**MANIFOLD FACES**

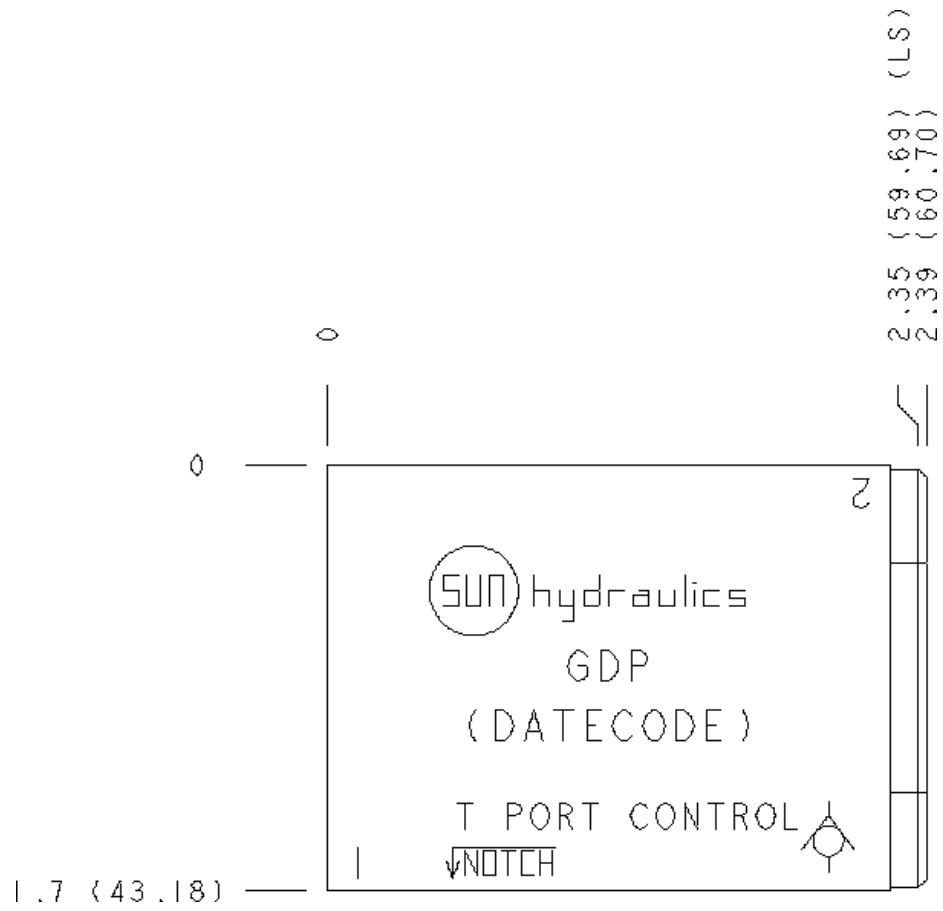
**FACE GRID**

1	2	3	4
5	6	7	8
9	10	11	12

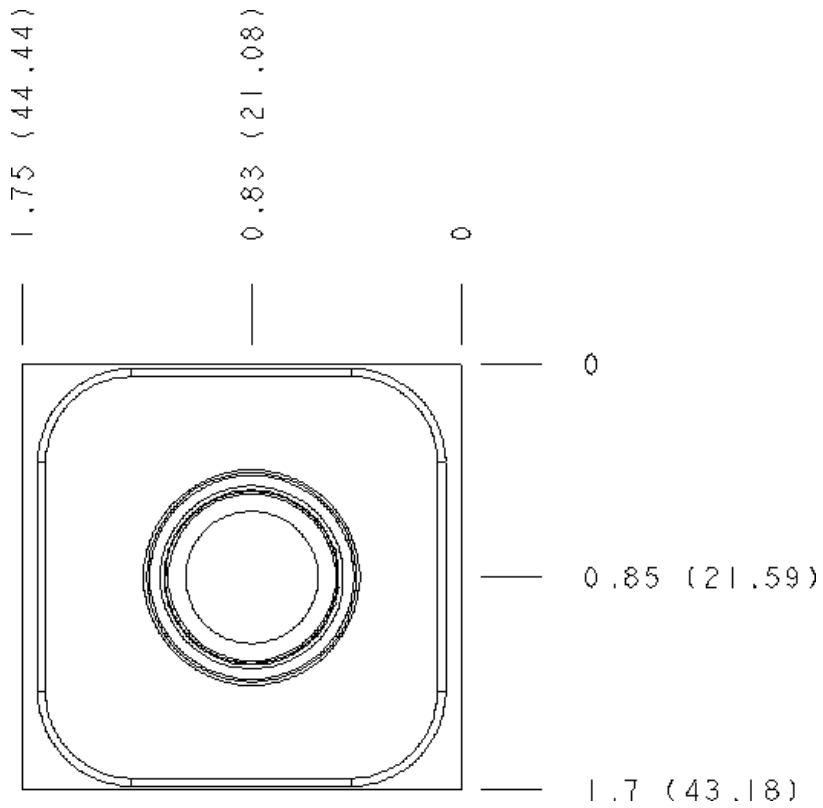
**Face 2**



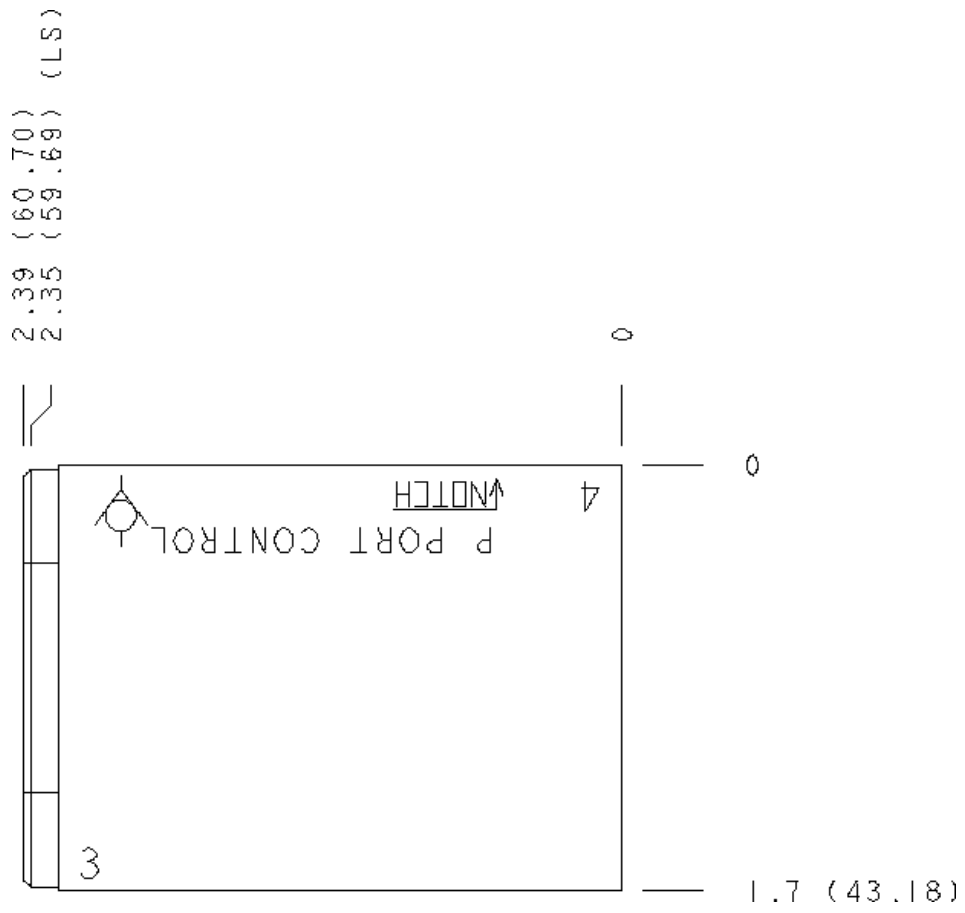
**Face 6**



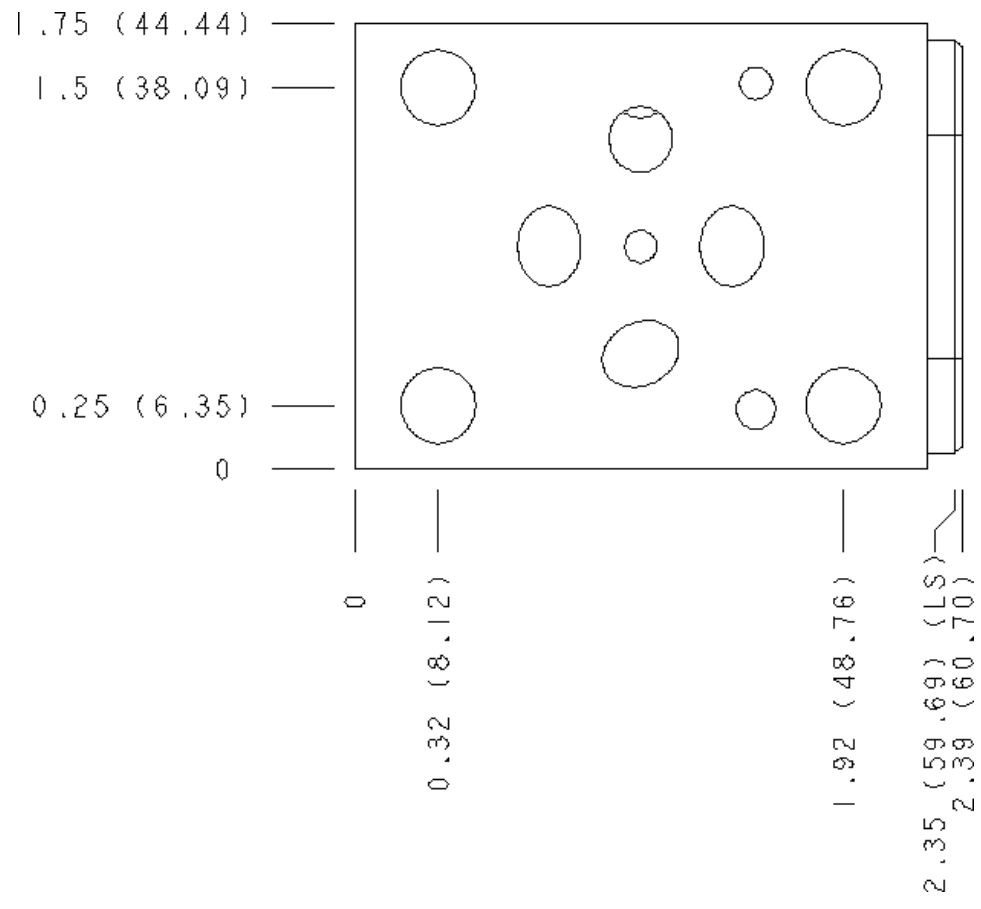
**Face 7**



**Face 8**



**Face 10**



Copyright © 2002-2014 Sun Hydraulics Corporation. All rights reserved.