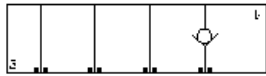
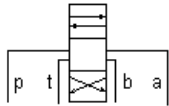


MODELL
GDA

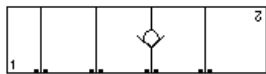
Strom in oder aus Arbeitsanschluss A oder B
EINSCHRAUBBOHRUNG: T-13A



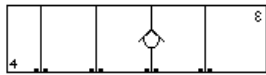
Check, On A, Free Flow into Valve



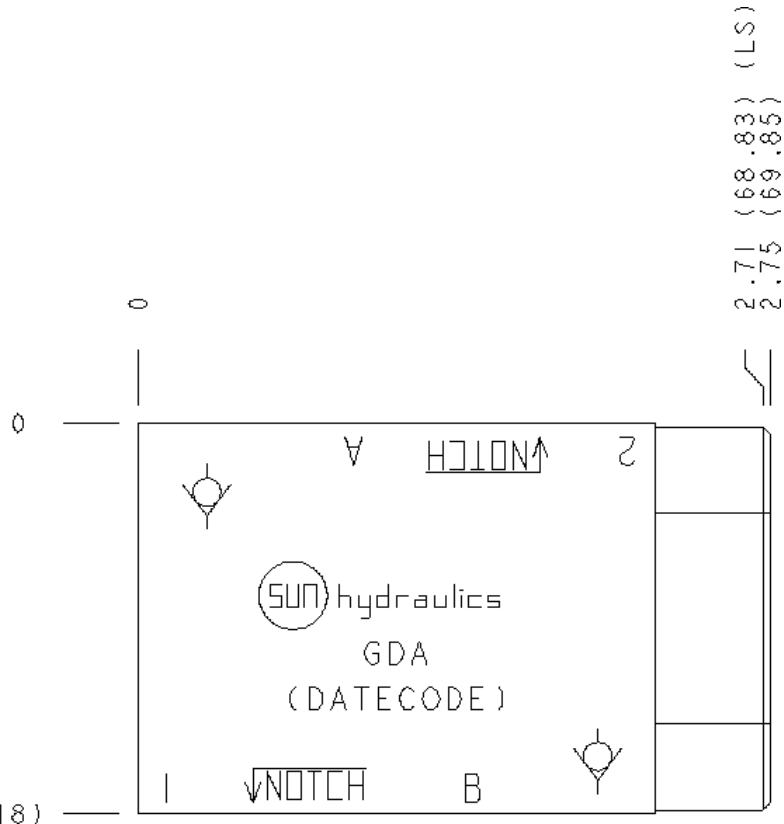
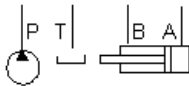
Check, On A, Free Flow Out Of Valve



Check, On B, Free Flow Into Valve



Check, On B, Free Flow Out Of Valve



KONFIGURATION ÄNDERN

(none) Modifier 6061-T651 Aluminum, Buna-N

KOMPONENTEN

Part	Beschreibung	Anzahl
500-001-012	O-Ring	4
700-002	Seal Plate	1
811-001-006	Pin	1

BEMERKUNGEN

For check valve application, use only with CX*A check valves - free flow nose to side.

Important: Carefully consider the maximum system pressure. The pressure rating of the manifold is dependent on the manifold material, with the port type/size a secondary consideration. Manifolds constructed of aluminum are not rated for pressures higher than 3000 psi (210 bar), regardless of the port type/size specified.

TECHNISCHE DATEN

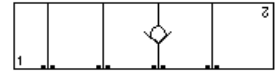
Gehäusetyp	Sandwich
Lochbild	ISO 03
Gehäuseeigenschaften	Strom in oder aus Arbeitsanschluss A oder B
Verkettungshöhe	44,5 mm
Einschraubbohrung	T-13A
Open Cavities	1

SYMBOLS

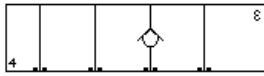
Check, On A, Free Flow into Valve

Check, On A, Free Flow Out Of Valve

Check, On B, Free Flow Into Valve



Check, On B, Free Flow Out Of Valve



CONFIGURATION OPTIONS

MODIFIER

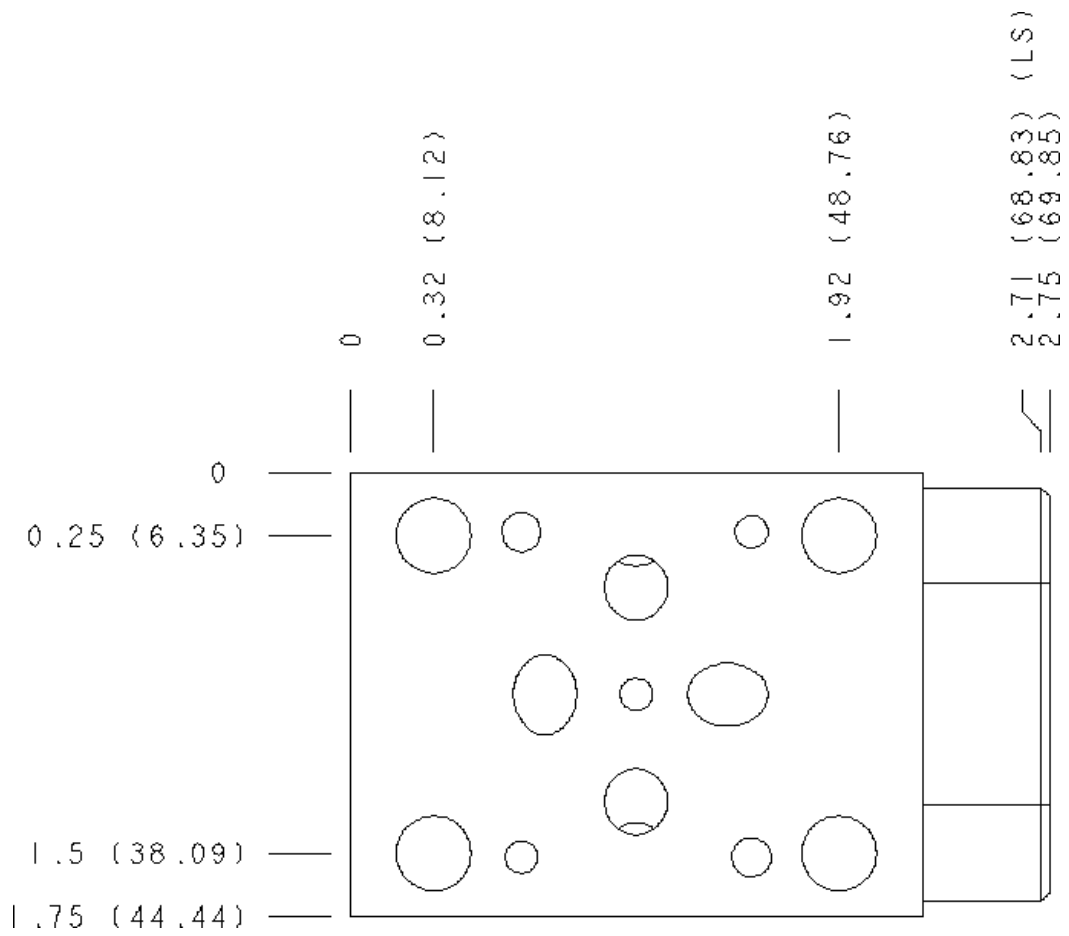
		6061-T651 Aluminum, Buna-N
Standard Options	/S	65-45-12 Ductile Iron, Buna-N, Blackened
	/V	6061-T651 Aluminum, Viton
	/Y	65-45-12 Ductile Iron, Viton, Blackened

MANIFOLD FACES

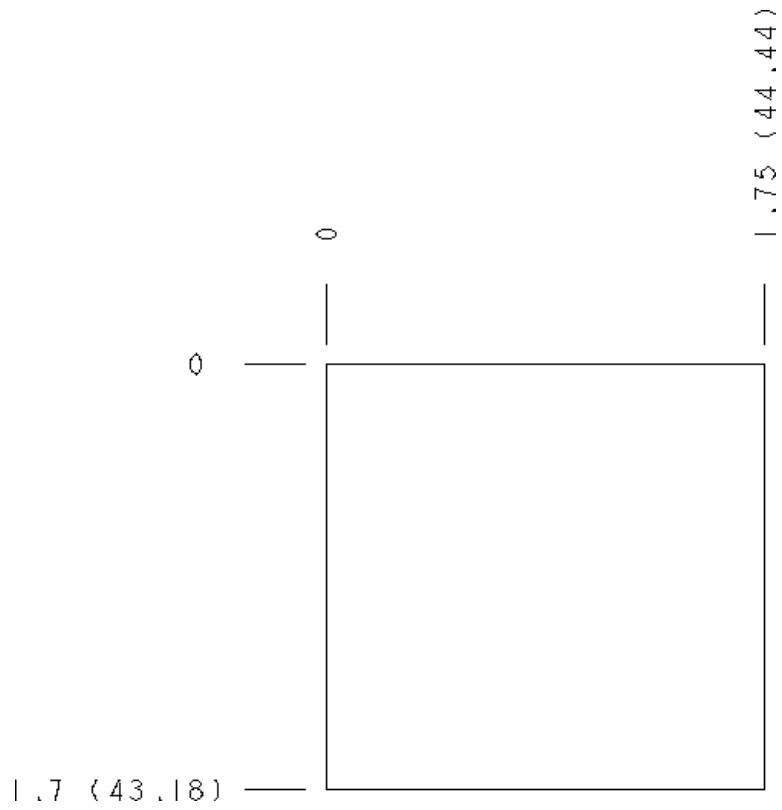
FACE GRID

1	2	3	4
5	6	7	8
9	10	11	12

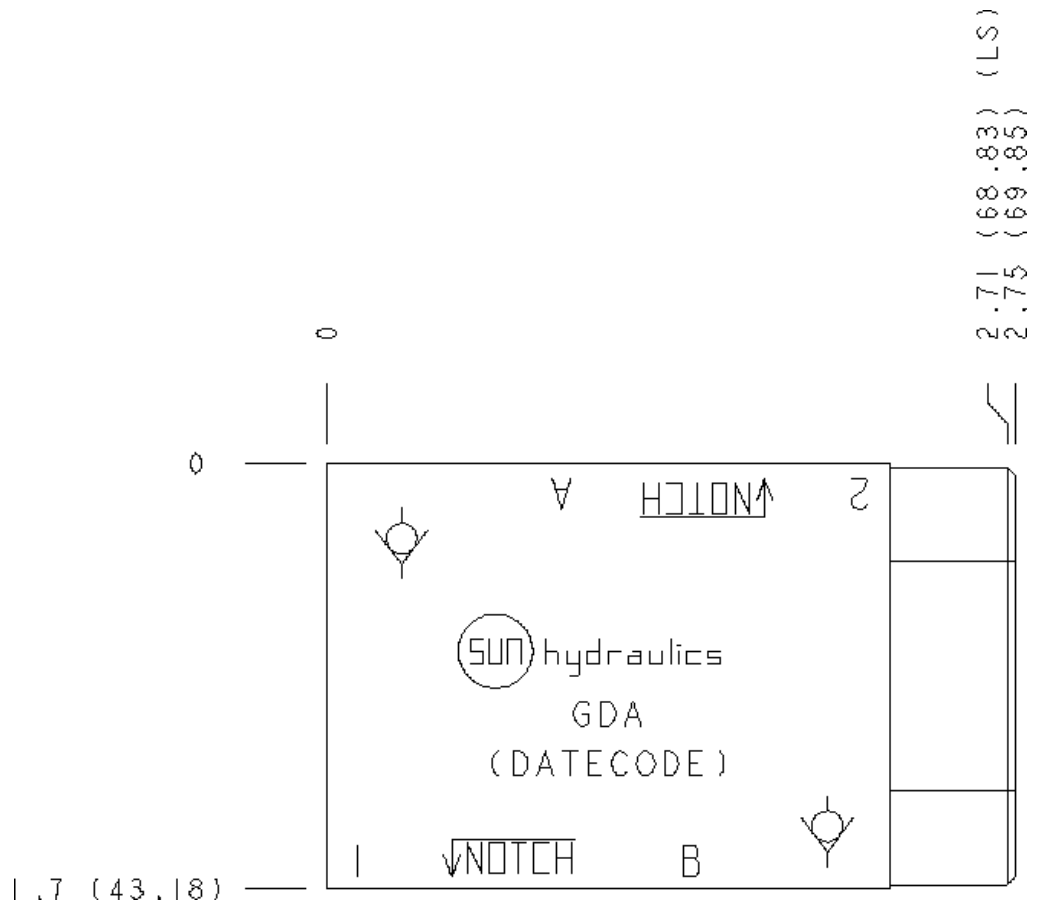
Face 2



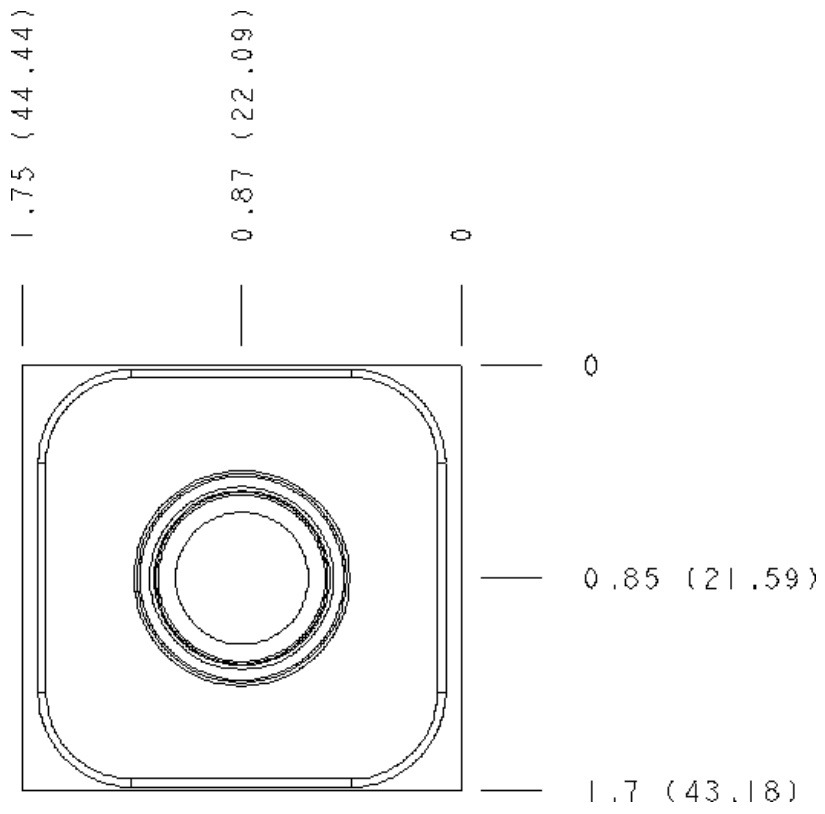
Face 5



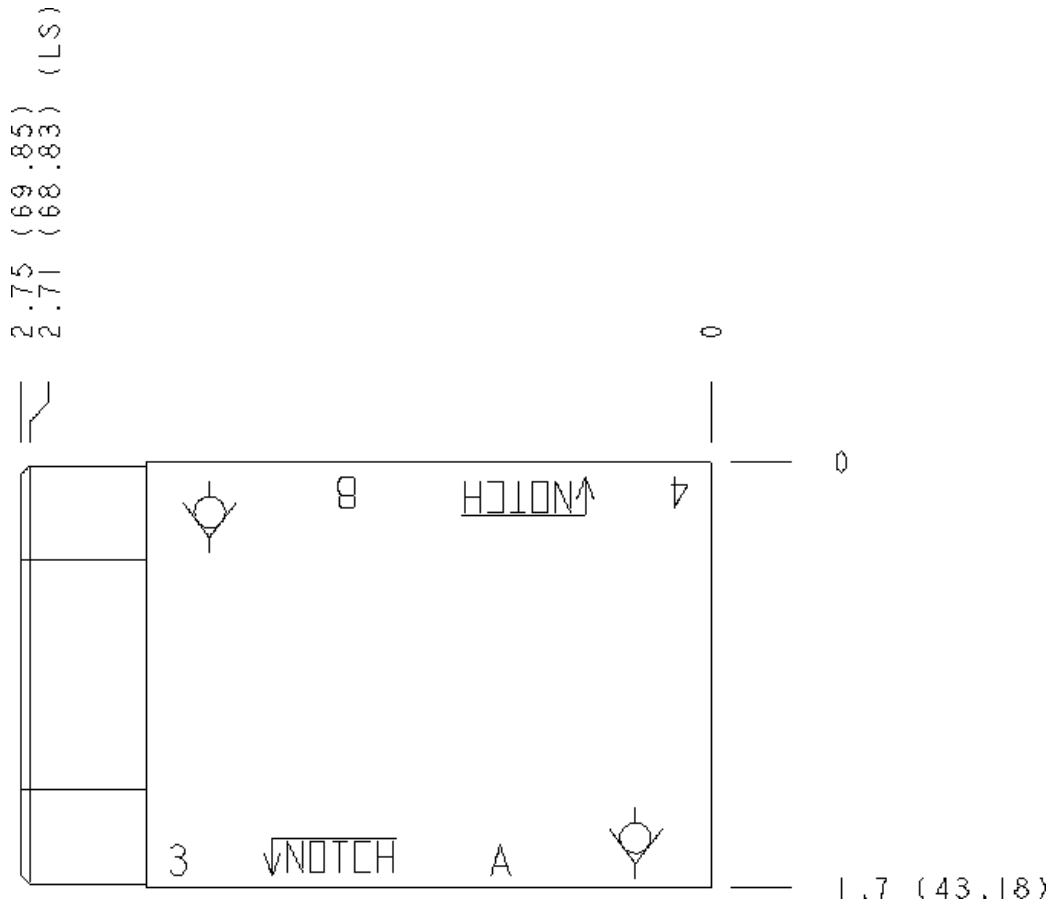
Face 6



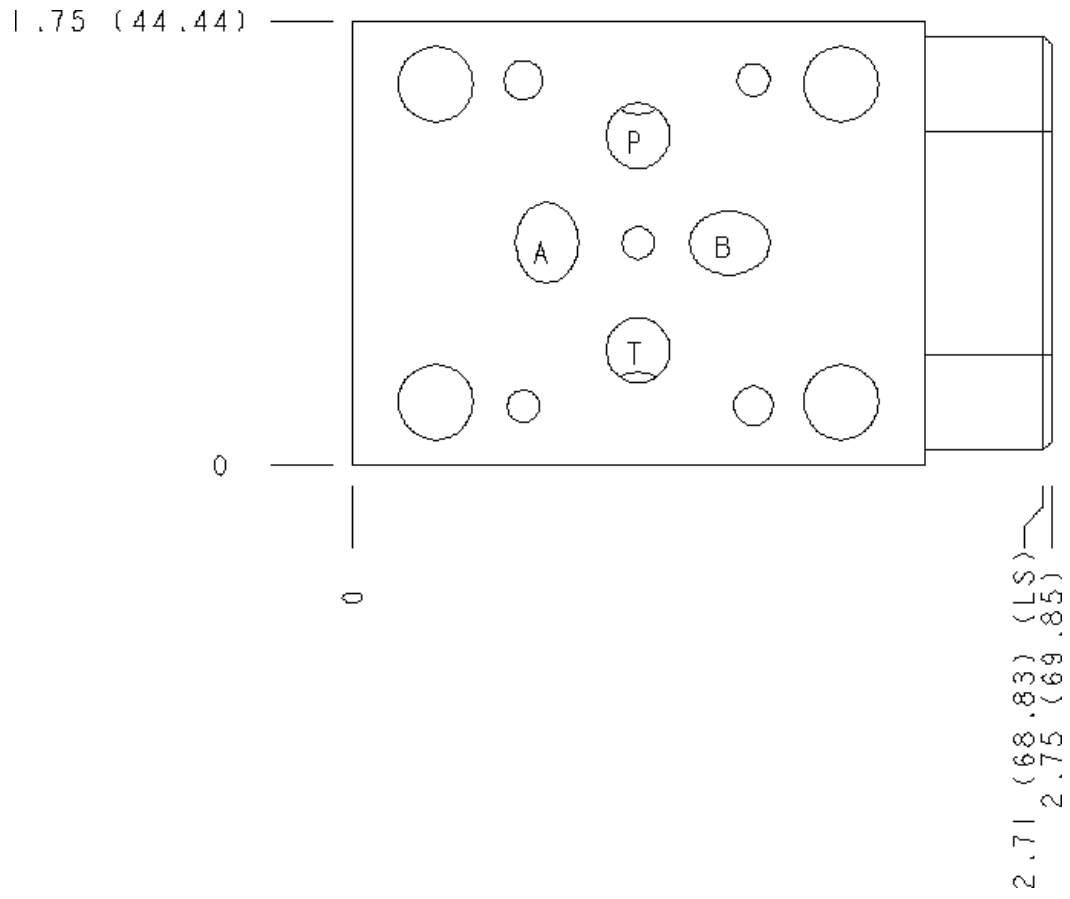
Face 7



Face 8



Face 10



Copyright © 2002-2014 Sun Hydraulics Corporation. All rights reserved.