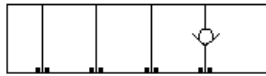
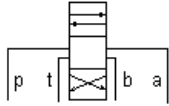
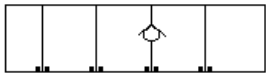


MODELL
DBJ

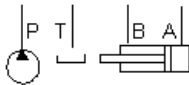
Strom in Arbeitsanschluss B oder aus A
EINSCHRAUBBOHRUNG: T-5A



Check, On A, Free Flow into Valve



Check, On B, Free Flow Out of Valve



KONFIGURATION ÄNDERN

(none) Modifier 6061-T651
Aluminum, Buna-N

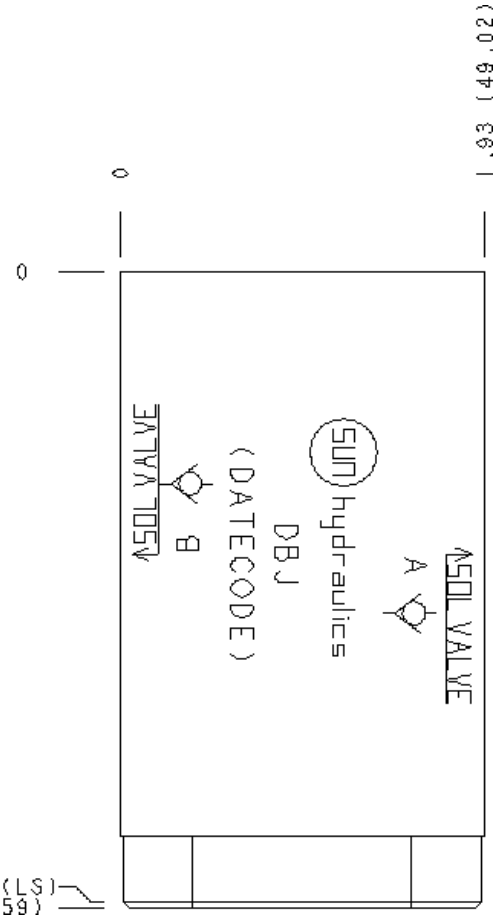
KOMPONENTEN

Part	Beschreibung	Anzahl
500-001-014	O-Ring	5
700-001	Seal Plate	1

BEMERKUNGEN

For check valve application, use only with CX*A check valves - free flow nose to side.

Important: Carefully consider the maximum system pressure. The pressure rating of the manifold is dependent on the manifold material, with the port type/size a secondary consideration. Manifolds constructed of aluminum are not rated for pressures higher than 3000 psi (210 bar), regardless of the port type/size specified.



TECHNISCHE DATEN

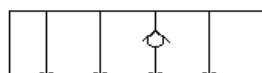
Gehäusotyp	Sandwich
Lochbild	ISO 05
Gehäuseeigenschaften	Strom in Arbeitsanschluss B oder aus A
Verkettungshöhe	50,5 mm
Einschraubbohrung	T-5A
Open Cavities	1

SYMBOLS

Check, On A, Free Flow into Valve



Check, On B, Free Flow Out of Valve



CONFIGURATION OPTIONS

MODIFIER

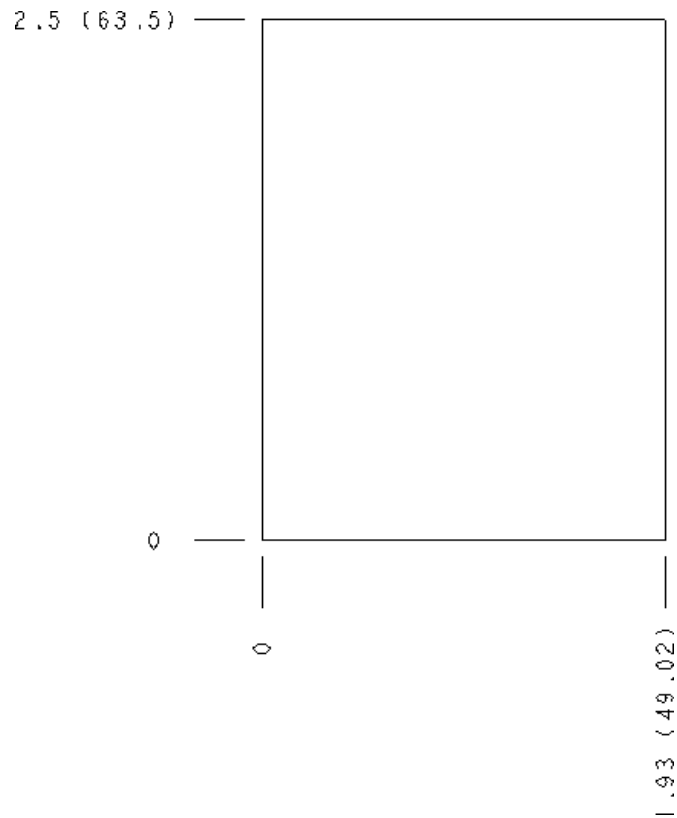
Standard Options	/S	6061-T651 Aluminum, Buna-N
	/V	65-45-12 Ductile Iron, Buna-N, Blackened
	/Y	6061-T651 Aluminum, Viton
	/V	6061-T651 Aluminum, Viton
	/Y	65-45-12 Ductile Iron, Viton, Blackened

MANIFOLD FACES

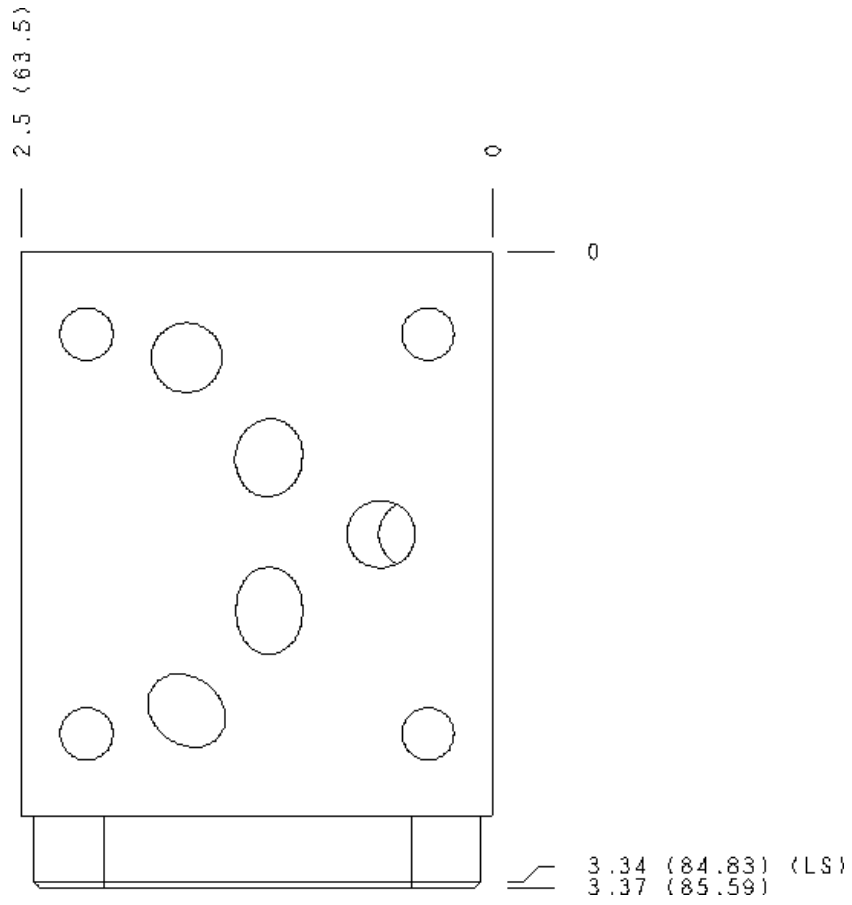
FACE GRID

1	2	3	4
5	6	7	8
9	10	11	12

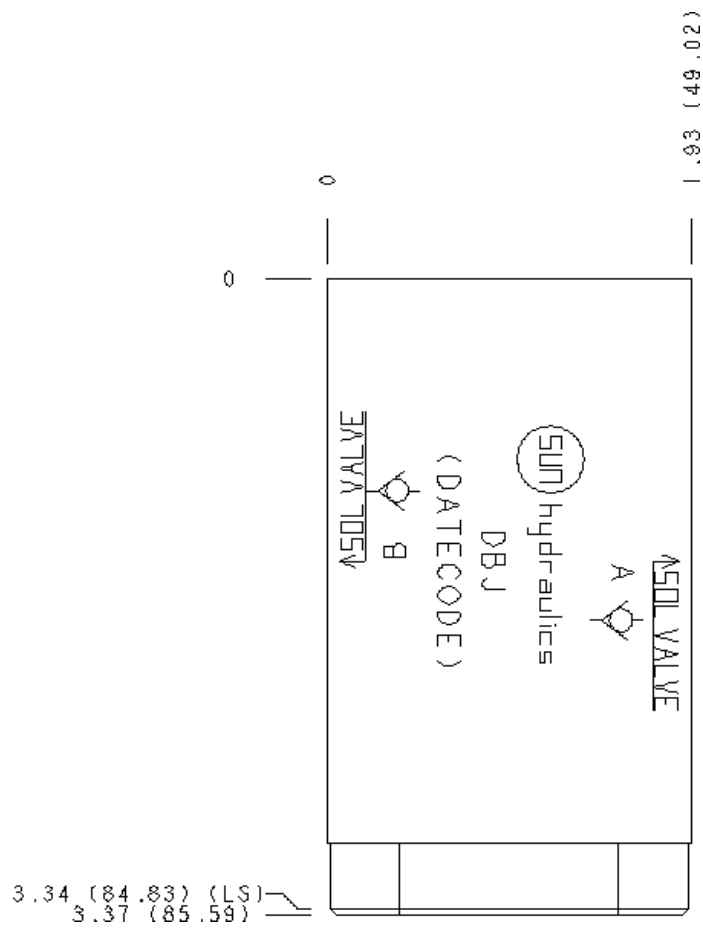
Face 2



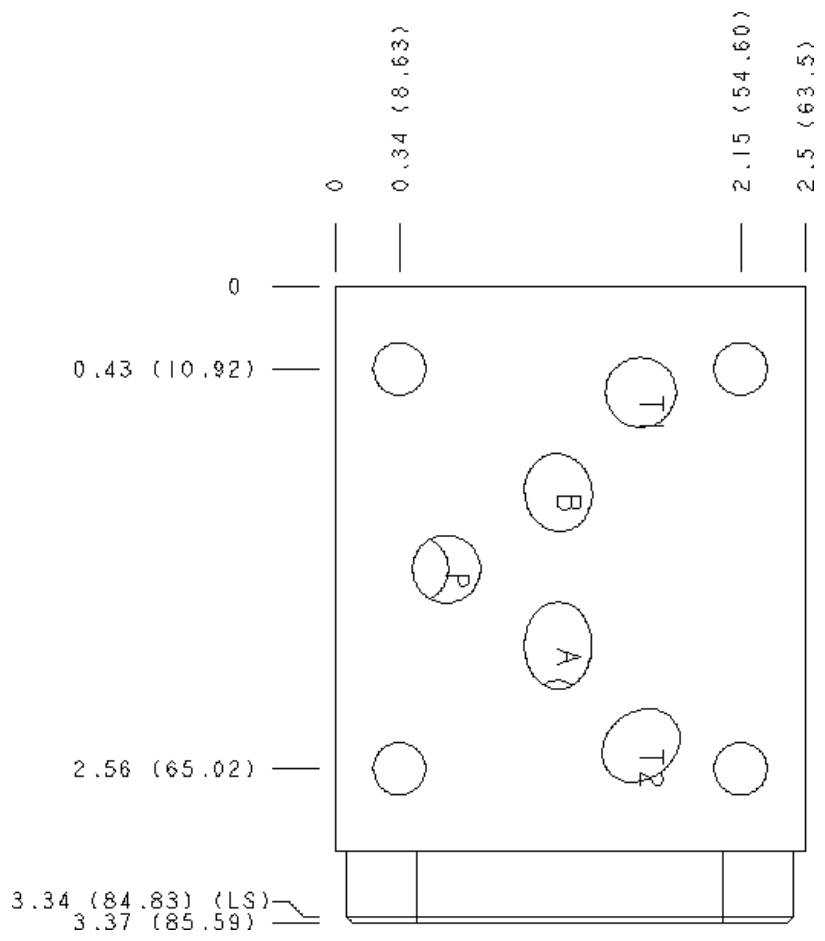
Face 5



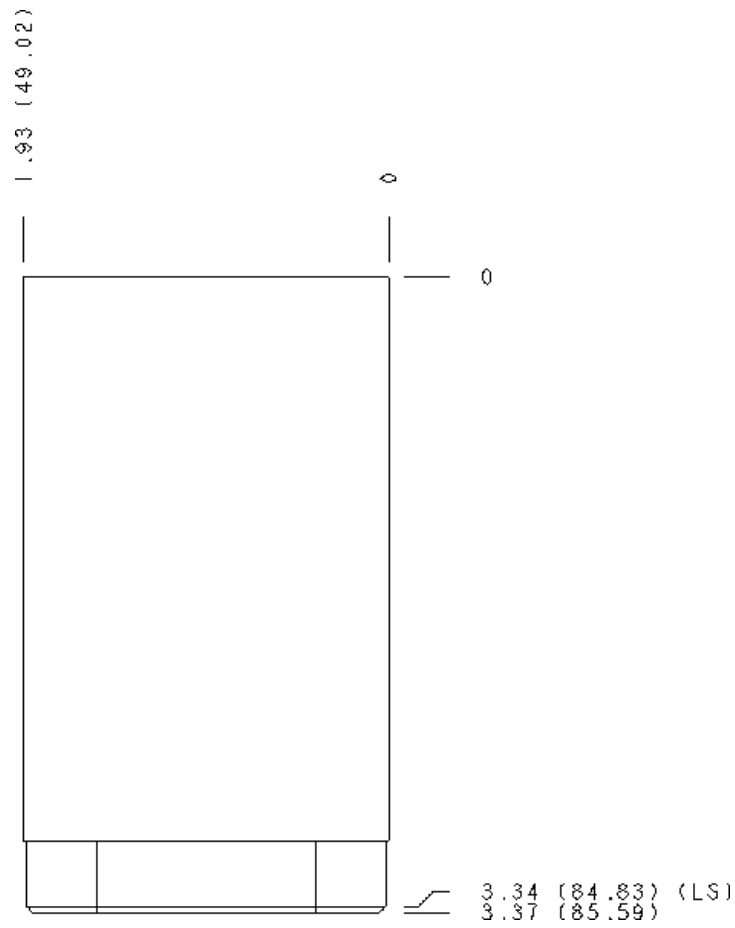
Face 6



Face 7



Face 8



Face 10

